

Silvermine

New
Members
2021 Exhibit

February 6th - March 13th



NEW MEMBERS EXHIBIT

February 6 - March 13, 2021

Silvermine Arts Center welcomes 38 new members into its historic Guild of Artists, with this exhibition presenting innovative work in a variety of mediums and styles.

Silvermine has been a place for artists to gather since 1906 when visionary sculptor Solon Borglum moved to the area and held annual exhibitions in his studio. He created weekly artist-critiques called the Knockers Club. Formed in 1922, The Silvermine Guild of Artists was incorporated in 1924 as a not-for-profit to provide a permanent and supportive community of artists. Guild members represent artists that have a high level of accomplishment and are selected through a jurying process. Since that time, Guild membership has grown to over 300 nationally and internationally exhibiting artists. Membership has included such renowned artists as Abe Ajay, James Daugherty, Carlus Dyer, James Flora, James Grashow, Robert Kaupelis, Alice Neel, Gabor Peterdi, Charles Reiffel, James Rosenquist and honorary member Faith Ringgold.

Since its inception, guild membership has been a selective peer jurying process. As a result, the guild has held its membership to high standards with many members having work represented in permanent collections of some of the world's most prestigious museums, as well as prominent private and corporate collections. This exhibition offers visitors an opportunity to engage with the newest members of this dynamic community of professional artists and learn about their works.

NEW MEMBERS 2020

Britt Bair – Rowayton, CT

Meg Bloom – New Haven, CT

Connie Brown – New Canaan, CT

Alder Crocker – Fairfield, CT

Cheri Dunnigan – Naples, FL

Kate Fauvell – New York, NY

Susan Fehlinger – Bridgeport, CT

Daniel Feldman – Pound Ridge, NY

Lisa Flynn – Scituate, MA

Heide Follin – Norwalk, CT

Kurt Gibson – Tucson, AZ

S.E. Gilchrist – Livingston, TX

Francine Gintoff – East Hampton, CT

Lois Goglia – Cheshire, CT

Jennifer Mone' Hill – Danbury, CT

Ellen Jacob – New York, NY

Matthew Karas – New York, NY

Barry Katz – New York, NY

Anya (Dana) Kotler – Weehawken, NJ

June Lee – Seoul, South Korea

Kerry Long – Trumbull, CT

Elaine Longtemps – Brooklyn, NY

David Marchi – Wilton, CT

Fruma Markowitz – Norwalk, CT

Ruben Marroquin – Bridgeport, CT

Carl Mehrbach – Lyme, NH

Nancy Natale – Easthampton, MA

Dido Nydick – Exeter, NH

Miller Opie – Norwalk, CT

David Ottenstein – New Haven, CT

Miguel Rivera – Kansas City, MO

Scott Roberts – Gardiner, NY

Minna Rothman – Brookline, MA

Arlene Rush – New York, NY

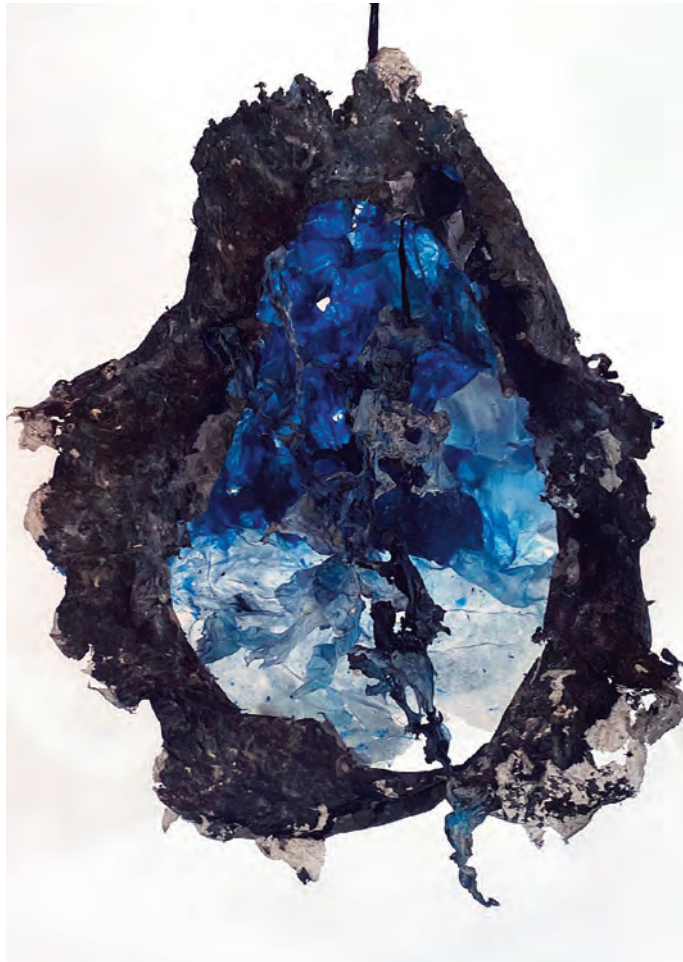
Nina Temple – Carmel Valley, CA

Roberta Tucci – Wilmington, DE

Jarvis Wilcox – Westport, CT

Debi Worley – Kirkwood, MO

Meg Bloom
New Haven, CT



Into the Deep
mixed media, 36 x 18 x 13 inches, \$1800

Meg Bloom
New Haven, CT



Chilled to the Bone
mixed media, 72 x 16 x 17 inches, \$2300

Connie Brown
New Canaan, CT



Lofty
acrylic on panel, 36 x 36 x 2.5 inches, \$3000

Connie Brown
New Canaan, CT



Twisted
acrylic on panel, 36 x 36 x 2.5 inches, \$3000

Alder Crocker
Fairfield, CT



Hatter's Surprise
acrylic on canvas, 48 x 36 x 2 inches, \$4500

Alder Crocker

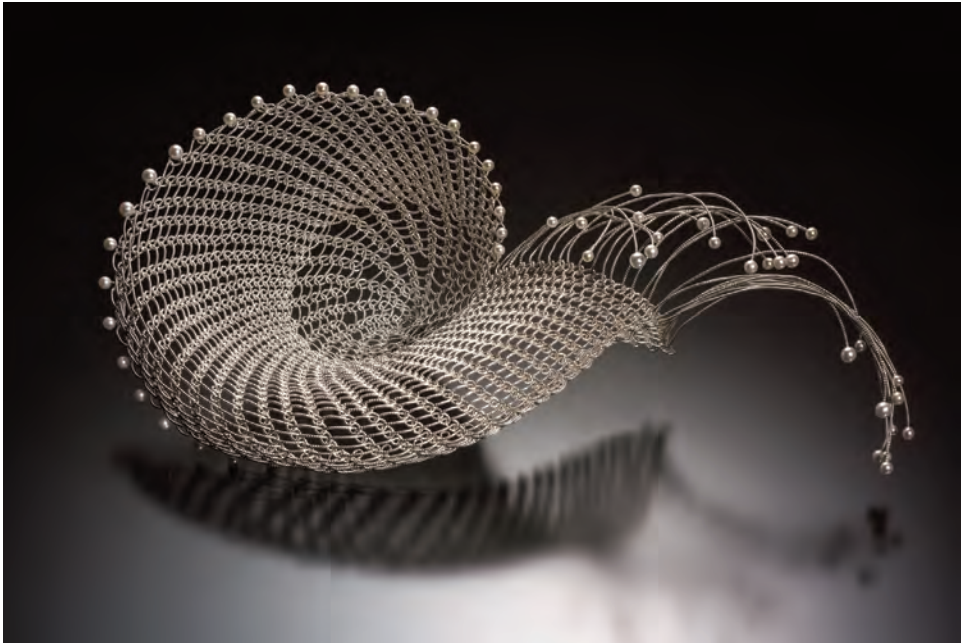
Fairfield, CT



Hatter's Obstacle

acrylic on canvas, 48 x 36 x 2 inches, \$4500

Cheri Dunnigan
Naples, FL



Spiral Form #1
sterling silver, pearls, 3 x 9 x 3 inches, \$8500

Cheri Dunnigan
Naples, FL



Spiral Form #6
sterling silver, pearls, 7 x 12 x 4 inches, \$8500

Kate Fauvell
New York, NY



The Streets Belong to Us
photographs, collage, acrylic on panel, 36 x 24 inches, \$3000

Kate Fauvell
New York, NY



Power to the People
photographs, collage, acrylic on canvas, 48 x 36 inches, \$3500

Susan Fehlinger
Bridgeport, CT



Bridgeport Close Up
oil on canvas, 20 x 20 inches, \$1600

Susan Fehlinger
Bridgeport, CT



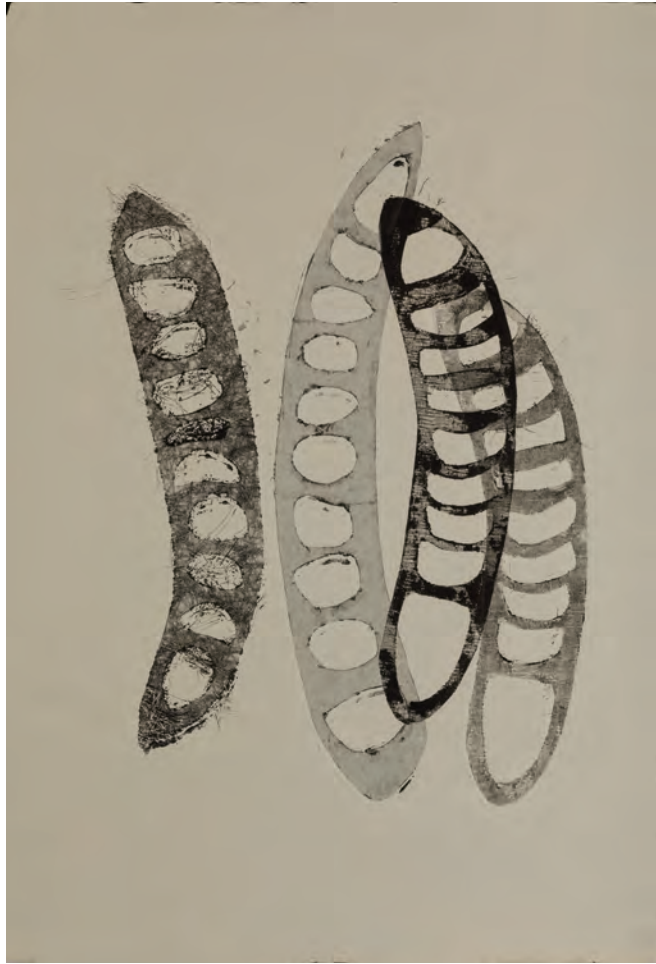
PEI Sheds
oil on canvas, 20 x 20 inches, \$1600

Susan Fehlinger
Bridgeport, CT



Canal Street Stop
diptych, oil on canvas, 14 x 28 inches, \$1800

Lisa Flynn
Scituate, MA



Pod I
collagraph, monotype, 28 x 21 inches, \$950

Lisa Flynn
Scituate MA



Pod II
collagraph, monotype, 28 x 21 inches, \$950

Lisa Flynn
Scituate, MA



Pod III
collagraph, monotype, 25 x 18 inches, \$950

Heide Follin
Norwalk, CT



Into the Blue
acrylic on gessoed watercolor paper, 50 x 38 inches, \$2900

Heide Follin

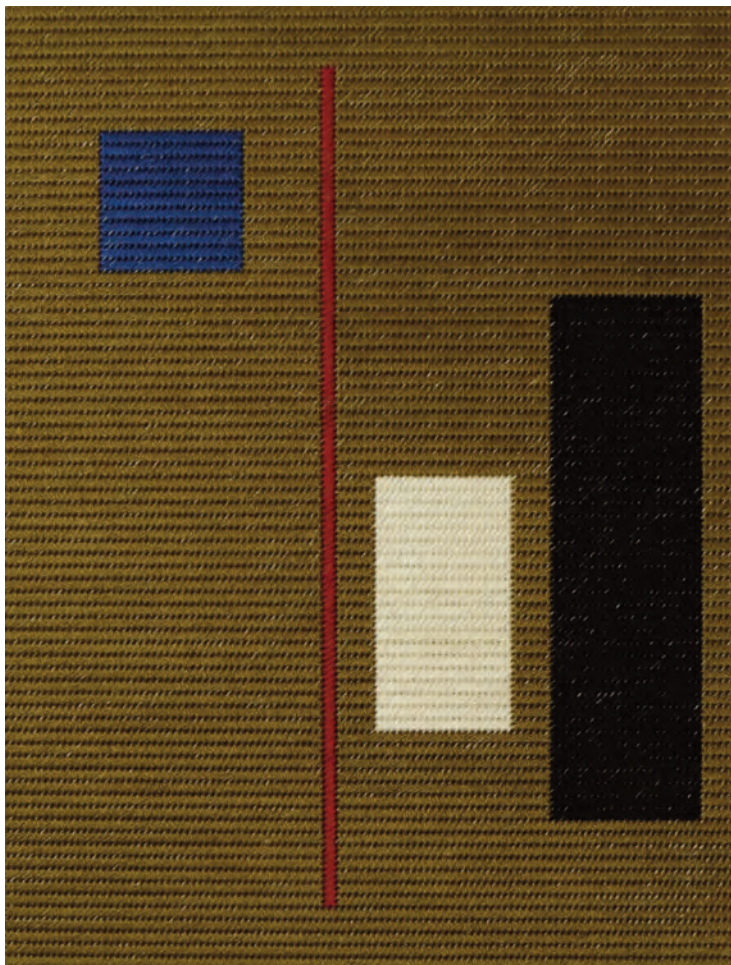
Norwalk, CT



Communing #1

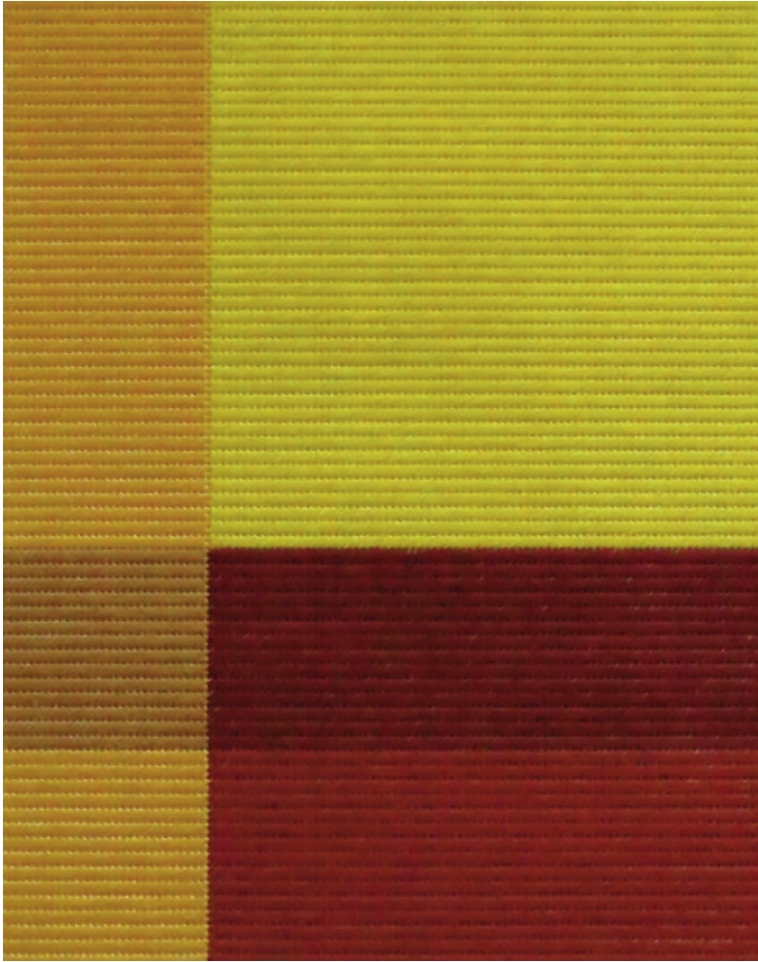
acrylic on gessoed watercolor paper, 50 x 38 inches, \$2900

S.E. Gilchrist
Livingston, TX



Untitled I
cotton thread, 21 x 17 inches, \$650

S.E. Gilchrist
Livingston, TX



Untitled II
cotton thread, 11.5 x 9.5 inches, \$470

Francine Gintoff
East Hampton, CT



ATOM EVE
oil pastel on paper, 50 x 40 inches, \$3800

Francine Gintoff
East Hampton, CT



guns and roses
oil pastel on paper, 50 x 40 inches, \$3500

Lois Goglia
Cheshire, CT



Dr. Fauci's Dream
brain cell photographs, tape, ink, paints, oil stick, 83 x 61 inches, \$2500

Jennifer Mone' Hill
Danbury, CT



Fascination No. 1
acrylic on canvas, 40 x 20 inches, \$1400

Jennifer Mone' Hill
Danbury, CT



Fascination No. 2
acrylic on canvas, 40 x 20 inches, \$1400

Ellen Jacob
New York, NY



Immigrants: Amanda and her daughter
archival pigment print, 43 x 33 inches, \$1800

Ellen Jacob
New York, NY



Immigrants: Lesedi, pseudonym
archival pigment print, 43 x 33 inches, \$1800

Matthew Karas
New York, NY



Code Switch
archival pigment print on fiber paper, mounted on aluminum,
edition:1 of 3, 30 x 20 inches, \$1500

Matthew Karas
New York, NY



Courage Ascending
archival pigment print on fiber paper, mounted on aluminum,
edition:1 of 3, 30 x 20 inches, \$1500

Barry Katz
New York, NY



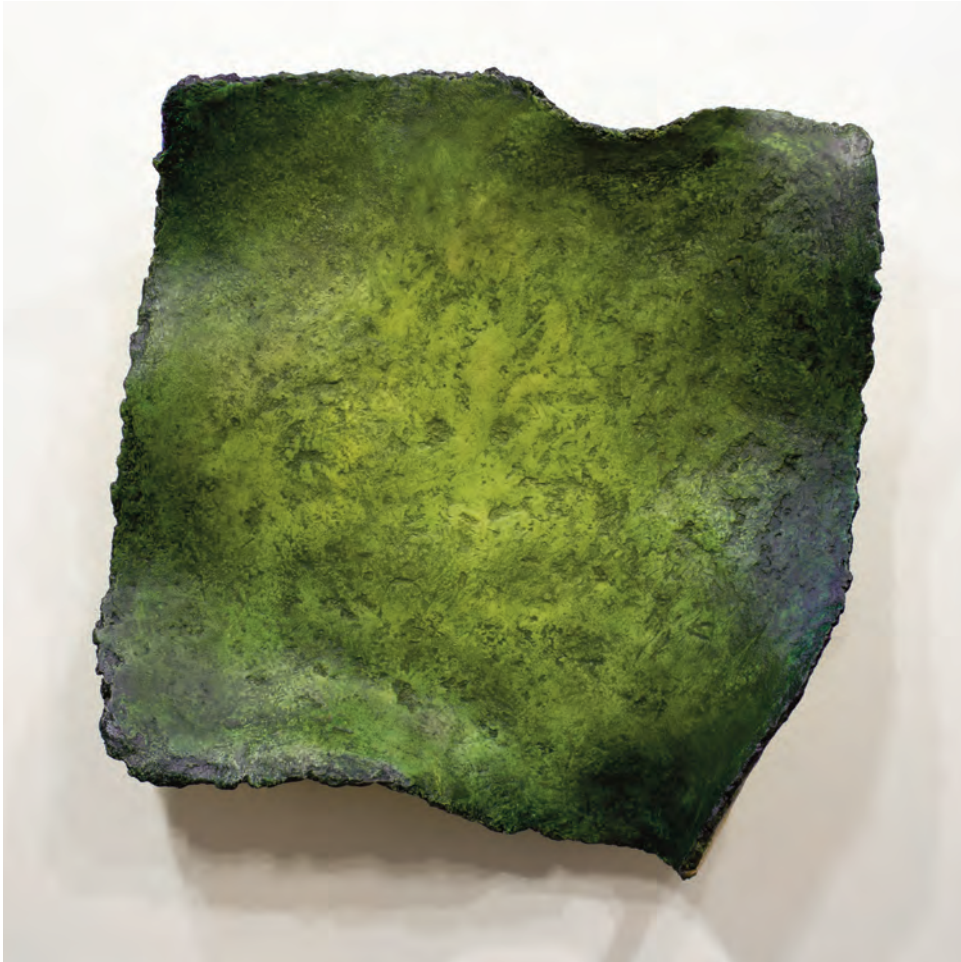
For Some Reason Zero
encaustic over plaster, 16 x 16 x 3 inches, \$1400

Barry Katz
New York, NY



More Likely
encaustic over plaster, 12 x 24 x 4 inches, \$1800

Barry Katz
New York, NY



My Kind of Romance
encaustic over plaster, 22 x 22 x 7 inches, \$3000

Anya (Dana) Kotler
Weehawken, NJ



Home

oil, acrylic, gold leaf, fabrics, plaster, yarn, silicone, plastic on canvas,
concrete, wood, 88 x 74 x 18 inches, \$14500

Anya (Dana) Kotler
Weehawken, NJ



Seems Like A Good Thing
oil on panels, 23.5 x 19 x 7 inches, \$3800

Kerry Long
Trumbull, CT



Constellation 1 [Tunnel]
film scan collage, 16 x 16 inches, \$550

Kerry Long
Trumbull, CT



Constellation 2 [Leap]
film scan collage, 16 x 16 inches, \$550

Kerry Long
Trumbull, CT



Constellation 3 [Hood]
film scan collage, 16 x 16 inches, \$550

Elaine Longtemps
Brooklyn, NY



Stardust for Twenty Angels (installed)

Elaine Longtemps
Brooklyn, NY



Stardust for Twenty Angels (pedestal element)
painted rope, sequins, crystals inserted into stretched canvas prepared for hanging,
15.5 x 30 x 24 inches, \$8000

Elaine Longtemps
Brooklyn, NY



Stardust for Twenty Angels (wall element)
painted rope, sequins, crystals inserted into stretched canvas prepared for hanging,
87 x 65 x 6 inches, \$8000

David Marchi



Richter Scale
acrylic on canvas, 50 x 40 x 2 inches, \$8500

David Marchi



Summit
acrylic on canvas, 40 x 80 x 2 inches, \$12000

Fruma Markowitz
Norwalk, CT



Wetlands Wonderland
original wet cyanotype; printed on Hahnemuhle Platinum Rag paper with soap suds, turmeric powder, vinegar spray added, 24 x 20 inches, \$750

Fruma Markowitz
Norwalk, CT



Against the Evil Eye
original wet cyanotype; printed on Shizen 100% cotton hand-made paper, with table salt,
turmeric powder, soap suds, vinegar spray added, 36 x 24 inches, \$2500

Fruma Markowitz
Norwalk, CT



Something On My Mind
original wet cyanotype; double exposure printed on Khadi 100% cotton hand-made paper,
with table salt, soap suds, vinegar spray and borax bleach added, 24 x 20 inches, \$500

Ruben Marroquin
Bridgeport, CT



Untitled

natural and metallic yarns on wire fence, Belgian linen, 30 x 38 inches, \$5400

Ruben Marroquin
Bridgeport, CT



Diamond
embroidery on dish rack, stretched Belgian linen, 21 x 19 inches, \$2900

Carl Merbach
Lyme, NH



Clever Liars
oil on canvas, 56.5 x 47.5 x 3 inches, \$5720

Carl Merbach
Lyme, NH



Stubborn & Egotistical
oil on canvas, 67.5 x 55 x 3 inches, \$5400

Nancy Natale
Easthampton, MA



Gold Stripe 1
papers, bristol board painted with acrylic, tarpaper, encaustic, tacks on panel,
30 x 24 x 1.5 inches, \$750

Nancy Natale
Easthampton, MA



Gold Stripe 2
papers, bristol board painted with acrylic, tarpaper, encaustic, tacks on panel,
30 x 24 x 1.5 inches, \$750

Dido Nydick
Exeter NH



Ida Nadi
digital printed on metal, 16 x 20 x 1.75 inches, \$750

Dido Nydick
Exeter NH



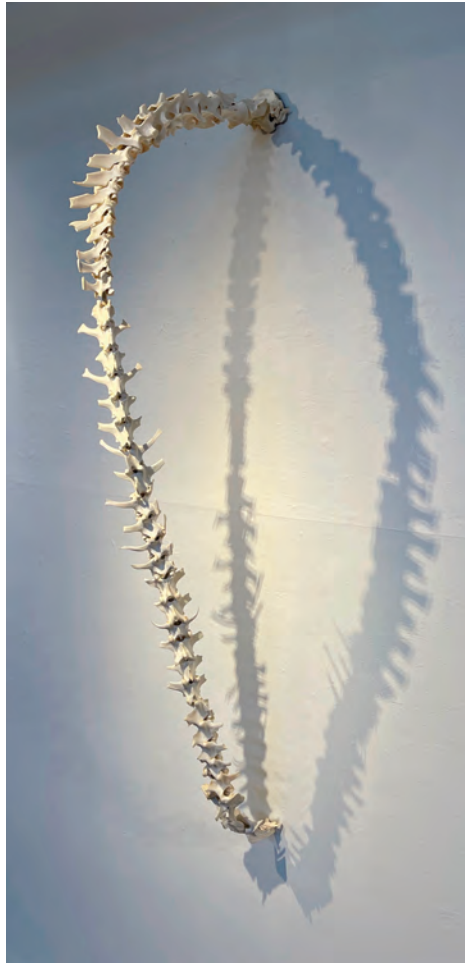
Urban Yellow
digital printed on metal, 16 x 20 x 1.75 inches, \$750

Dido Nydick
Exeter NH



Demise
digital printed on metal, 16 x 20 x 1.75 inches, \$750

Miller Opie
Norwalk, CT



Adaptation
vertebrae sections from 3 different deer and 1 calf, steel rod, linen ribbon,
aluminum mounting plate, 58 x 4 x 19.5 inches, \$2000

Miller Opie
Norwalk,CT



Jeté
moose ribs, assorted feathers, wire, hemlock base, 19 x 15 x 7.5 inches, \$2500

David Ottenstein
New Haven, CT



Downey Grain Elevator
archival pigment ink, 30 x 24 inches, \$995

David Ottenstein
New Haven, CT



Corn Crib interior, Marshall County
archival pigment ink, 30 x 24 inches, \$995

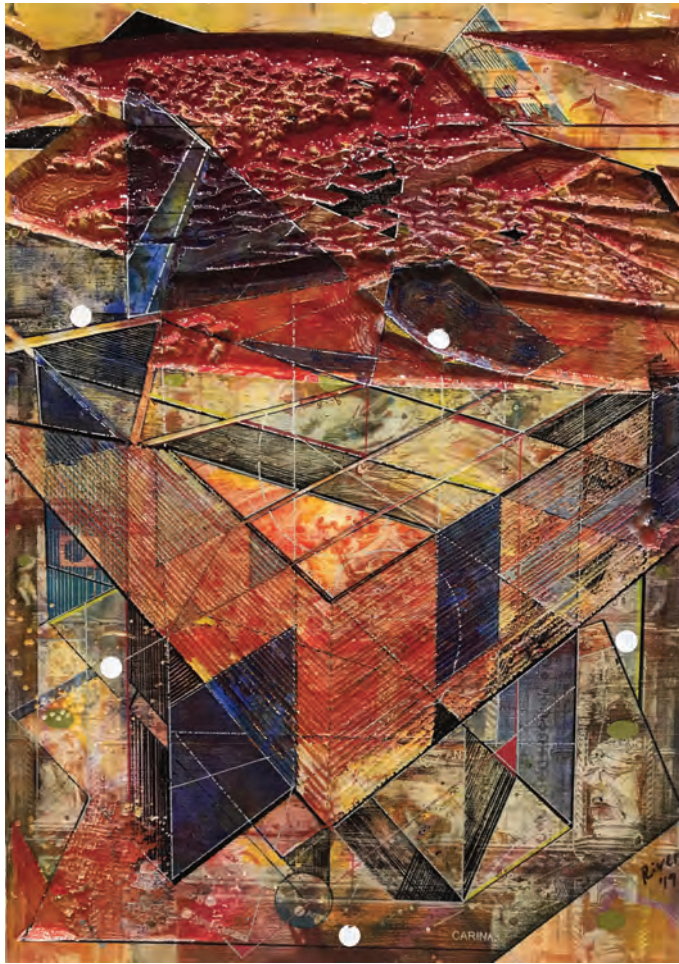
Miguel Rivera
Kansas City, MO



45.4337°N 12.3404°E
print and paint on wood panel, 23.75" x 16" x 2 inches, \$1400

Miguel Rivera

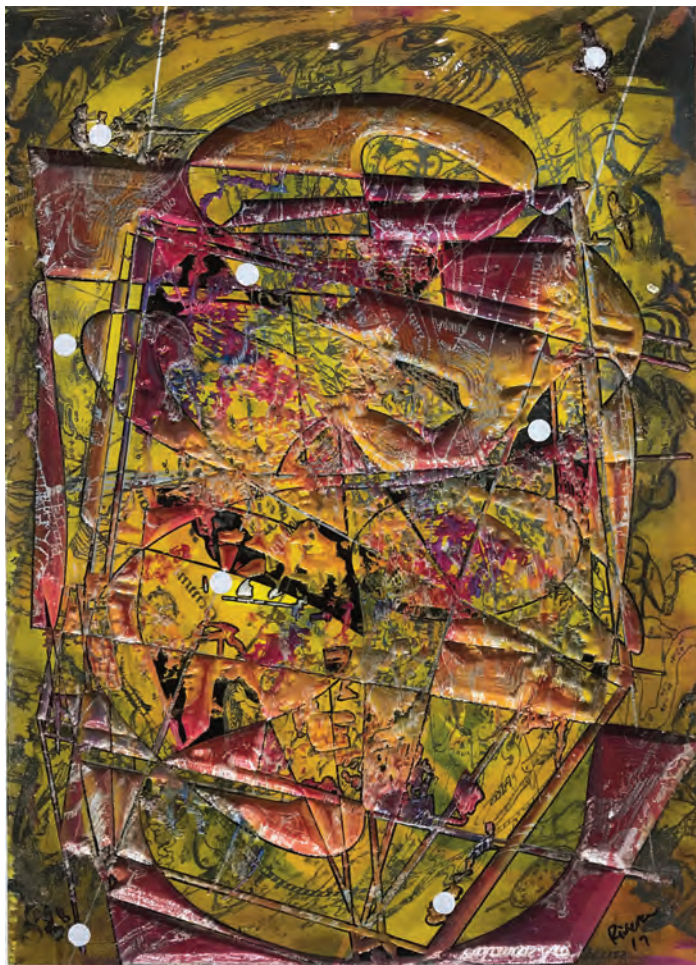
Kansas City, MO



45.4434°N, 12.3280° E

print and paint on wood panel, 23.75" x 16" x 2 inches, \$1400

Miguel Rivera
Kansas City, MO



RA 17h 45m 40s | Dec -29° 0' 28"
print and paint on wood panel, 23.75" x 16" x 2 inches, \$1400

Scott Roberts
Gardiner, NY



Arcadian Aether
acrylic, oil on canvas, 48.5 x 72.5 x 2 inches, \$8000

Minna Rothman
Brookline, MA



Migration 2015: In The New Lands (installed)

Minna Rothman
Brookline, MA



Migration 2015: In The New Lands (left panel, diptych)
handwoven, wool, silk, linen warp, cotton lining , 31 x 14 inches, \$2300

Minna Rothman
Brookline, MA



Migration 2015: The Wall (right panel, diptych)
handwoven, wool, silk, linen warp, cotton lining, 24 x 31 inches, \$2700

Minna Rothman
Brookline, MA



Migration 2015: Integration
handwoven tapestry, decorative thread, metallic, wool, linen warp, cotton lining,
55 x 32 inches, \$8200

Arlene Rush
New York, NY



#AnimalRights

brass, metal gold leaf, velvet fabric, tassels, metal, plaster, polyurethane,
32 x 13 x 13 inches, \$5000

Arlene Rush
New York, NY



#GlobalWarming
brass, metal gold leaf, velvet fabric, tassels, metal, plaster, polyurethane,
32 x 13 x 13 inches, \$5000

Arlene Rush
New York, NY



#Liberty

brass, metal gold leaf, velvet fabric, tassels, metal, plaster, polyurethane,
32 x 13 x 13 inches, \$5000

Arlene Rush
New York, NY



#SuperSizeAmerica
brass, metal gold leaf, velvet fabric, tassels, metal, plaster, polyurethane,
32 x 13 x 13 inches, \$5000

Arlene Rush
New York, NY



#Tweet

brass, metal gold leaf, velvet fabric, tassels, metal, plaster, polyurethane,
32 x 13 x 13 inches, \$5000

Nina Temple
Carmel Valley, CA



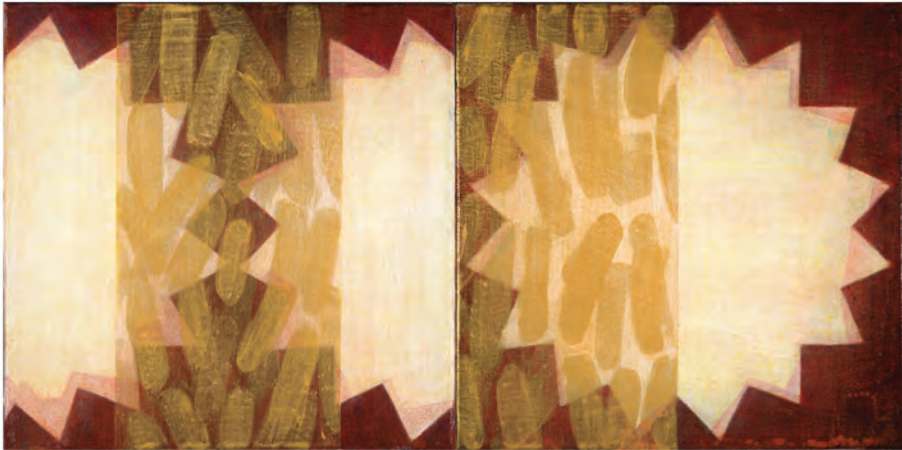
Babushka
ink on cold pressed arches watercolor paper with deckled edges,
38 x 29.5 x 2 inches, \$2400

Nina Temple
Carmel Valley, CA



Tucked Away
ink on cold pressed arches watercolor paper with deckled edges,
38 x 29.5 x 2 inches, \$2400

Roberta Tucci
Wilmington, DE



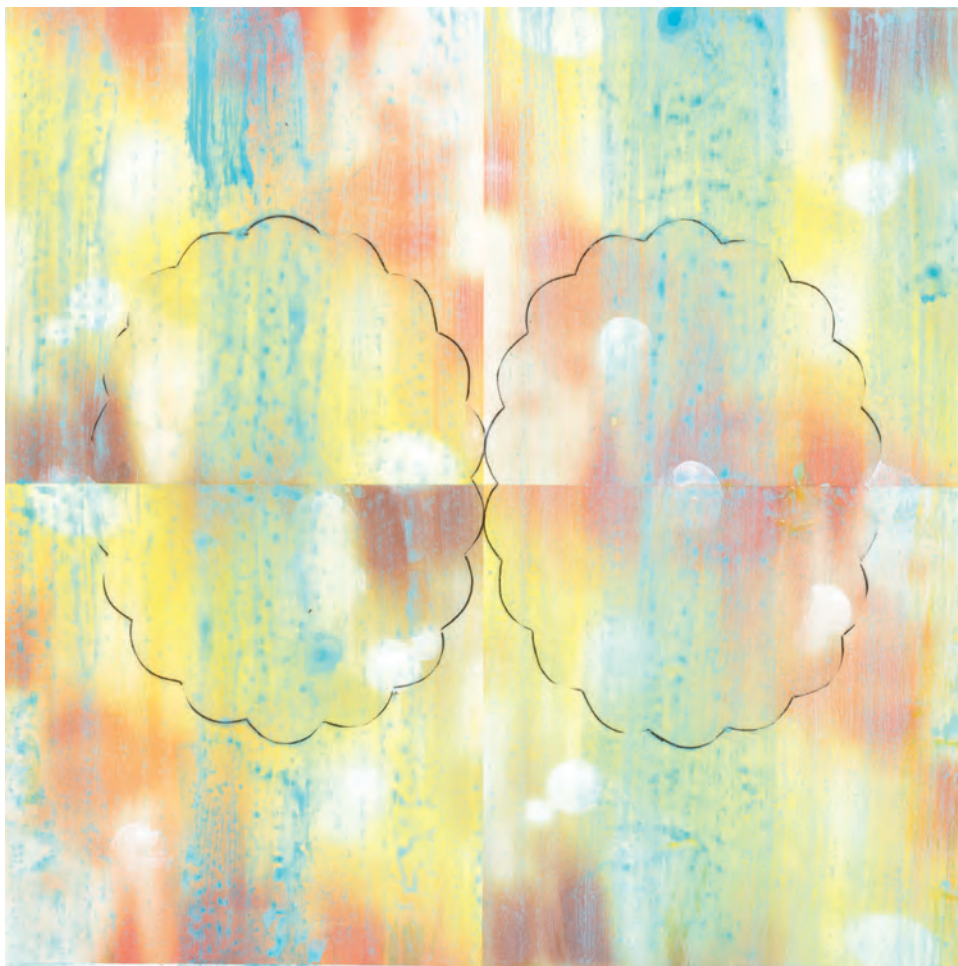
Red Interruption Sequence (diptych)
acrylic on canvas, 12 x 24 inches, \$950

Roberta Tucci
Wilmington, DE



Boom (Purple)
acrylic on paper, 16 x 16 inches, \$650

Roberta Tucci
Wilmington, DE



Counterpart
acrylic on paper, 16 x 16 inches, \$650

Jarvis Wilcox
Westport, CT



Peonies in a Silver Chalice
oil on linen, 42 x 34 inches, \$7200

Jarvis Wilcox
Westport, CT



White Peaches in Red wine for Dessert
oil on masonite, 17 x 19 inches, \$3200

Debi Worley
Kirkwood, MO



Layer Upon Layer
white earthenware, cone 10, wall /ceiling hook, 42 x 16 x 16 inches, \$1800

Debi Worley
Kirkwood, MO



Blue 1
porcelain stained fiber clay, cone 10, resin, 4.5 x 13 x 9 inches, \$1000

Silvermine Galleries

Silvermine Galleries represents the Silvermine Guild of Artists. Our Galleries have exhibited art luminaries including Joseph Albers, Gabor Peterdi, Milton Avery, Elaine deKooning, Clement Greenberg, Alice Neel, Louise Nevelson, Larry Rivers, Christo and Jeanne-Claude, Faith Ringold, James Rosenquist, Chuck Close, Philip Johnson, and many others.

The Galleries continue to expand on our heritage through compelling exhibitions of art by emerging and internationally recognized artists. A distinguished list of curators have juried many of our landmark exhibitions, among them are Dore Ashton, Milton Avery, Bill Carroll, Tom Eccles, Andre Emmerich, Jennifer Farrell, Henry Geldzahler, Patricia Hickson, Hilton Kramer, Beth McLaughlin, Barbara O'Brien, David Ross, Holly Solomon, Allan Stone, Ann Temkin, and Marcia Tucker.

Our exhibitions are accompanied by programming that encourages appreciation of art and its role in society. Our layered approach is tailored to make our exhibitions meaningful, accessible, and enjoyable for diverse audiences of every age and background and always offer opportunities for visitors to connect with art, and each other through an exploration of ideas.

Silvermine Guild of Artists

Silvermine has been a place for artists to gather since 1906 when visionary sculptor Solon Borglum moved to the area and held annual exhibitions in his studio. He created weekly artist-critiques called the Knockers Club. Formed in 1922, The Silvermine Guild of Artists was incorporated in 1924 as a not-for-profit to provide a permanent and supportive community of artists. Guild members represent artists that have a high level of accomplishment and are selected through a jurying process.

Silvermine Guild of Artists has been a hub for some of the most talented artists in the Northeast. Guild membership has grown to almost 300 artist members nationwide, and has included such renowned artists as Abe Ajay, James Daugherty, Carlus Dyer, James Flora, James Grashow, Robert Kaupelis, Alice Neel, Gabor Peterdi, Charles Reiffel, James Rosenquist and honorary member Faith Ringgold.

Since its inception, guild membership has been a selective peer jurying process. As a result, the guild has held its membership to high standards with many members having work represented in permanent collections of some of the world's most prestigious museums, as well as prominent private and corporate collections.

Board Of Trustees

Chair

Rose-Marie Fox

Vice Chair

Barbara Linarducci*

Treasurer

Grace Tang

Secretary

Emily McDermott

Board Members

Mark Carta

Stephanie Joyce

William Hilson

Joseph J. Kais

Karen Neems

Guild Co-Chairs

Roger Mudre*

Jon Puzzuoli

* Ex-Officio

Honorary Board

Cynthia Guest

Sally Sheehy

Leonard Tow

Diana Wege



Gallery Staff

Gallery Director
Roger Mudre
roger@silvermineart.org
203.966.9700 x26

Gallery Assistant
Emily Bockisch
gallery@silvermineart.org
203.96.9700 x20



Canal
Street

Silvermine

Silvermine Arts Center 1037 Silvermine Road New Canaan, CT 06840
www.silvermineart.org