

Silvermine

Annual Report





**Table of Contents**

3 Letter from CEO  
4 School of Art  
10 Outreach  
12 Galleries  
22 Guild of Artists  
28 Annual Gifts  
30 Financial Summary  
31 Staff  
Board of Trustees  
Institutional Partners

**On our cover:**

Janine Brown, detail of  
"The Wallflower at the Dance"  
(Installation)

**This page:**

Janine Brown, still Image from  
"The Wallflower at the Dance" (Video)

**Page 3:**

Sophie Swann, *Dancers* #3

**Letter from CEO**



Bridgeport Public Schools (BPS). Alicia Robinson, Director of Performing and Visual Arts says of our collaboration, "The Silvermine Arts Center and BPS partnership is an exciting opportunity and I look forward to realizing organizational goals by helping Bridgeport Public School students excel academically through collaboration, arts integrated teaching and multi-modal learning experiences." Our studio art programs will fully engage students and advance critical thinking, problem solving and collaboration, supporting better academic achievement and life skills.

With the year nearing an end, we were confident that FY20 would have a positive result. Then COVID-19 struck and forced our closure.

While we could have remained shut down, we felt strongly about staying connected and accessible to our community. *Art sparks creativity, heals the spirit, and brings us together.*

So during the time we were temporarily closed, we went to work utilizing every resource to connect with our community. We pivoted the Gallery to *Virtual Exhibitions* – giving visitors an immersive experience of viewing artwork, watching videos, and

listening to curator and exhibiting artists' commentary.

We moved the School of Art *Online*—offering multidisciplinary courses and workshops via Zoom. Students of all ages and skill levels enjoyed classes taught by our esteemed instructors from the comfort and safety of their homes. Our success with the classes has led to their becoming an integral part of the curriculum.

And we proudly announced representation of Guild Artists on *artnet*, the online leader in global art and gallery representation. Silvermine now joins major NYC, London and Hong Kong Galleries in worldwide prestige.

These were just some of our extraordinary accomplishments before we safely and successfully reopened in July. I am deeply grateful and proud of our staff and instructors for their dedication and perseverance. They work diligently and creatively to accomplish our mission, even though we are critically under resourced. And yet they make it happen and are deserving of much applause.

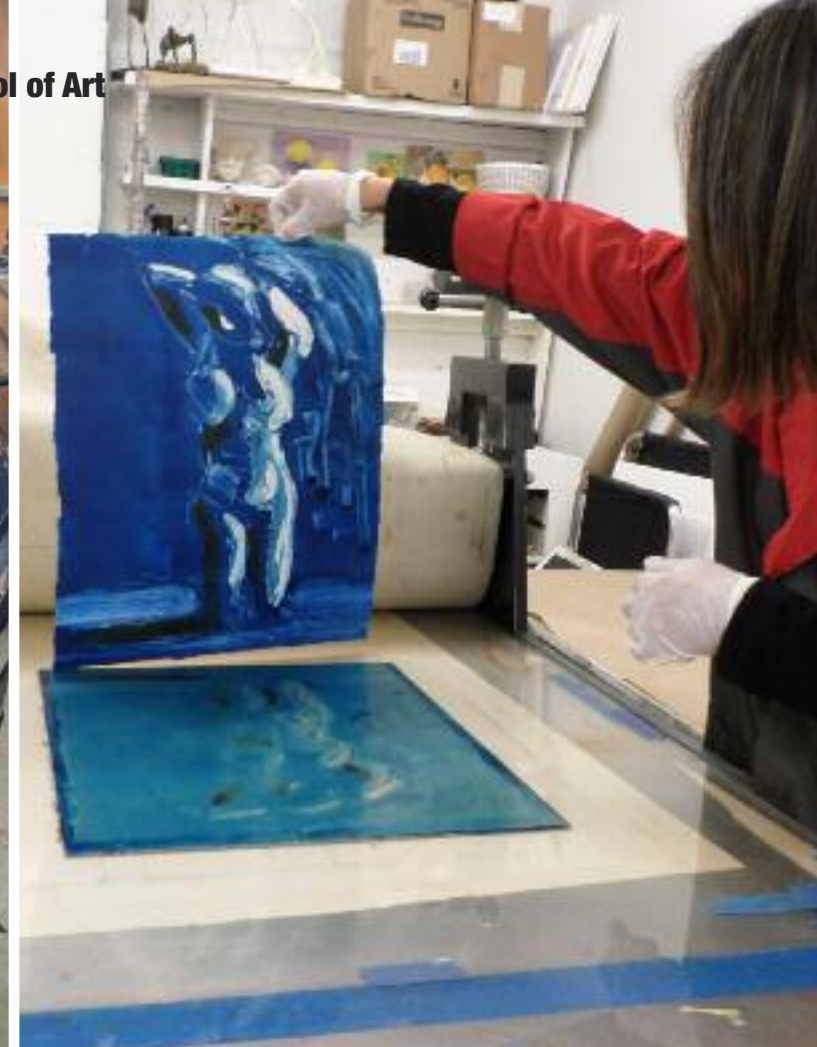
I also want to thank our Board of Trustees for the exceptional leadership they have shown under the most difficult circumstances, and express my appreciation to our all our generous supporters.

Together, we look to the future knowing that Silvermine will be a constant in our community.

With sincere gratitude,

Barbara Linarducci  
Chief Executive Officer





## Make cultural connections. Make geographic leaps. And while you're at it, make art.

The School of Art continues its legacy of award winning art education with over 5,000 annual enrollments (ages 4 to 94) in all levels of art proficiency from beginner to advanced. With over 1,100 courses, workshops and youth programs held throughout the year it provides a nurturing environment – unstructured enough to encourage creativity, yet disciplined enough to provide a solid foundation.

Renown plein-air artist and lecturer Jill Steenhuis from Aix-en-Provence, France, offered a special two-day color workshop and lecture about Van Gogh at the School. Jill has exhibited in solo shows in major American cities, as well as in Aix-en-Provence and Paris. Her work is part of the permanent collections of several museums and private collections in America and in France. Jill served as the Cézanne specialist for the Smithsonian Institute for the 100th anniversary of the painter's death and has served as a Cézanne and Van Gogh specialist for several institutions including the Oakland Museum (California), the Clarke Art Institute, the High Museum of Atlanta, and the Harvard University Museum.

We celebrated the inaugural firing of our new custom-built Soda Kiln. (Soda firing has a unique and beautiful finish that can't be imitated.) The event was the culmination of a 5-year project made possible by funding from Silvermine and generous donations



of individuals, many of whom are pottery students.

Our excitement came to a halt mid-March with the COVID-19 pandemic lockdown. Although the school closed to the public, the staff worked remotely to transition course offerings to an online learning platform. Instructors taught a wide variety of classes and workshops including painting, drawing, printmaking, puppetry, photography, animation, and more. Participation from students came locally, nationally and even internationally.

We took advantage of the empty campus to "spruce up" the studios with fresh paint and a deep cleaning. Moreover, our print studio now has new windows made possible by generous donations at last year's Gala Awards Benefit and the efforts of our Board member, Joe Kais.

At the end of June, we happily and safely welcomed back our students for in-person Summer Art Studios and Summer Adult courses. Even with capacity restrictions, over 500 students of all ages attended classes, wearing masks, socially distancing and following prescribed CDC and State

### Guidelines.

Many normally in-studio classes and activities moved outdoors. We added additional plein-air painting classes taking advantage of our pastoral campus during the warm weather.

While today's world might look and feel different from last year, Silvermine has been successful in remaining a constant in people's lives by keeping our students inspired and motivated through their passion for visual art.







The Soda kiln was constructed by internationally known ceramicist, author, and teacher, Bruce Denhear. The first firing was conducted by Bruce along with our pottery instructors. "The Soda kiln at Silvermine elevates our pottery program greatly. The unique rich surfaces and glaze effects provided by the kiln are unparalleled. With only a few similar kilns in the Tristate area, Silvermine Arts Center will capture clay artists' attention from a wider radius ensuring the continued success of our long renowned pottery department," said Studio Manager Jon Puzzuoli.











## With paint, clay, paper, and willing hands, we're building bridges one step at a time.

### Art Partners

Art Partners programs strive to close Connecticut's educational achievement gap – one of the largest in the nation – by providing access to the arts through uniquely designed programs that target critical student needs. We work with community partners to bring curriculum-based enrichment to over 1,100 students annually in under-resourced schools throughout Fairfield County. Building on the concept that art transcends race, language, and socio-economic status; our programs create a level playing field leading a pathway to success.

### Highlights of this year:

- With a grant from the Cornelia T. Bailey Foundation, Art Partners expanded its reach into Bridgeport, connecting with four public schools to offer much-needed programming.
- Silvermine Elementary, a Dual Language Magnet School and a lead SEL (social-emotional learning) school, reached a milestone this year with the 20th anniversary of their 5th grade mural project. The mural is a parting gift to the school and a legacy that remains as the students move on.
- Norwalk Housing Authority youth went a step further this year with their Poetry & Visual Arts Program by connecting to the UN initiative ART 2030. Participants created meditative

"Breathe With Me" line paintings with emphasis on the air we breathe and how it connects each of us to a larger world. "Breathe with Me" is an ongoing, multifaceted global art project by Jeppe Hein and ART 2030 to bring the entire world together with one simple, universal action: breathing. It inspires engagement that is impactful in a multitude of ways to see how the world can breathe together for a better future. The project gave each person the opportunity to become more aware of their surroundings while having a deeper understanding of how we are all interconnected.

### Art Academy

In partnership with STAR, Inc., Silvermine continues its 'ArtAcademy' Program to benefit people with disabilities. ArtAcademy taps into the transformative power of art for adults with intellectual and developmental disabilities by engaging them in a variety of art classes in an inclusive setting on Silvermine's campus as well as through remote 'Zoom' lessons. This program was made possible by generous contributions from the Horizon Foundation and the Sidney Weiner Memorial Scholarship Fund.

### Creative Connections

To Russia With Love...With funding provided by Colgate, the students at Nathan Hale Middle School participated in a Creative Connections cultural exchange program with students from Ryazan, Russia. Exploring the intricacies of the topic "Our Environment, Our Culture" both sides of the ocean shared

original art works through video conferencing with poise and respect for each other. The exchange opened their world to making new friends in places that are not as foreign as we may have originally thought.

We are grateful for the continued support of our Corporate and Foundation sponsors: Hearst Foundation, Colgate-Palmolive Company, Newman's Own Foundation, Bedford Social Responsibility Fund, George A. & Grace L. Long Foundation, and Bankwell as well as the generous support of individuals who enable us to continue these important programs.



*Left page, clockwise from top: Silvermine Elementary School's 20th mural; Students at Nathan Hale zooming with their Russian peers; Students painting the mural; This page: Norwalk Housing Authority youth holding their 'Breathe with Me' painting.*





## Walk your way through a goldmine of artistic expression. And feel free to talk about it.

The Galleries present relevant, visually compelling art exhibitions, accompanied by programs and events, to heighten appreciation and understanding of art and its role in society. Our inclusive approach encompasses programming tailored to make our exhibitions meaningful and accessible to diverse audiences of every age and background. Distinguished guest curators jury many of our landmark exhibitions. All of our installations use art to create opportunities for learning and provide a venue for broadening participation across media, disciplines, cultures and contexts.

On the following pages, we proudly display selected highlights from each of these exhibitions. We invite you to walk through and enjoy this wide array of talent!

### *The Show Must Go On...*

When the Stay at Home order was signed by the Governor, the galleries were just closing one exhibition and in the midst of receiving artwork for the national FIBER 2020 show.

Wanting to remain engaged with our audience during this period of isolation, we knew we had to open the exhibition online and immediately went to work redesigning our website to accommodate the new "virtual" experience. We expanded the gallery pages to include images of all artwork as well as audio clips from the curator and interviews

with the exhibiting artists.

We honed our skills and thought of new ways to share the exhibition on social media platforms. The behind the scenes work of un-packing and installing almost 80 pieces of artwork was shared on our Instagram and Facebook pages, keeping our followers engaged during installation. We also launched a video series called *Virtual PechaKucha's* on our new YouTube channel, where each artist tells a visually compelling story about their creative process.

These past several months have highlighted Silvermine's resilience and perseverance in a trying time for our community. We have and will continue to work towards the larger goal of supporting and cultivating a passionate and talented community of artists while keeping everyone in that community, and beyond, connected with one another and safe and healthy.

### Highlights of this year:

**'Summer Salon' Guild Exhibition**  
July 6 – August 21, 2019

**69th AONE**  
September 7 – October 18, 2019

**HeART & Mind**  
October 31, 2019 –  
January 12, 2020

**New Members Exhibition**  
January 19 – February 15, 2020

**Fiber 2020**  
April 4 - July 8

View the exhibitions on our website:  
[www.silvermineart.org/galleries/](http://www.silvermineart.org/galleries/)





## Galleries



**'Summer Salon' Guild Exhibition**  
 July 6 – August 21, 2019  
 This prestigious exhibition, juried by Paul Efstathiou, Director of Contemporary Art, Hollis Taggart, NY, celebrated once again, an accomplished group of more than 130 painters, sculptors, printmakers, collage and mixed media artists from our national roster of Guild Artist members.

View the exhibition on our website:  
[silvermineart.org/exhibition/silvermine-guild-summer-salon/](http://silvermineart.org/exhibition/silvermine-guild-summer-salon/)



summer salon







Galleries

#### 69th AONE

September 7 – October 18, 2019

This exhibition is an annual, national competition highlighting the diversity of work that is currently being made by established and emerging artists. AONE spotlights contemporary trends and new explorations across various media. Curated by Bill Carroll, Director of the Studio Program, The Elizabeth Foundation for the Arts.

View the exhibition on our website:  
[silvermineart.org/exhibition/69th-aone/](http://silvermineart.org/exhibition/69th-aone/)



69th



AONE







**HeART & Mind**  
 October 31, 2019 –  
 January 12, 2020  
 This exhibition and accompanying programs engaged our community in conversations about mental health and the healing power of art. It opened a window to creativity and well-being by bringing together works by an exceptional array of artists who are exploring mental health issues—intimacy and inwardness, inclusion and exclusion, anxiety and serenity, love and loss, addiction and recovery, and the yearning to understand and accept ourselves and to connect in an authentic way to those around us.

View the exhibition on our website:  
[silvermineart.org/exhibition/heart-mind/](http://silvermineart.org/exhibition/heart-mind/)







**Fiber 2020**

April 4 – July 8, 2020

This exhibition showcased the best of contemporary fiber art and reflected a breadth of functional and non-functional works that use natural fiber and/or high tech materials in traditional or innovative ways. Curated by Beth C. McLaughlin, Chief Curator of Exhibitions and Collections at Fuller Craft Museum in Brockton, MA.

View the exhibition on our website:  
[silvermineart.org/online-exhibition/fiber-2020/](https://silvermineart.org/online-exhibition/fiber-2020/)



**Fiber 2020**







**Guild of Artists**

Silvermine



**It's still a place  
where artists'  
imaginations and  
visions rule.**

Since 1906 when visionary sculptor Solon Borglum moved to Silvermine and held annual exhibitions in his studio and weekly critiques called the Knockers Club, Silvermine has been a place for artists to gather.



In 1922 The Silvermine Guild of Artists was formed and later incorporated as a not-for-profit to provide a permanency to the community of artists.

Silvermine has a 98-year reputation of exhibiting and involving art luminaries such as Joseph Albers, Gabor Peterdi, Milton Avery, Elaine deKooning, Clement Greenberg, Louise Nevelson, Larry Rivers, Jeanne-Claude and Christo, James Rosenquist, Chuck Close, Philip Johnson—and the list goes on.

Today, the Guild is comprised of over 300 professional artists who enhance and change the way we experience art. Widely respected and highly collectible, their multi-disciplined work

can often be viewed in Gallery exhibitions.

We continue to honor our heritage by expanding the borders of our contemporary exhibitions to include recognized emerging artists from across the United States to exhibit at Silvermine. These exhibitions highlight current art trends and broaden the community's understanding and appreciation of art by bringing some of the most influential pundits in contemporary art to Fairfield County.

**New Members**

Each year the Guild is honored to welcome into its ranks a competitively selected group of new artist members. Since its inception, Guild membership has been a juried process based on the quality of the artists' submitted works and professional achievements. Our Guild members have attained a superior level of technical and creative accomplishment as demonstrated by numerous group and solo exhibitions, awards, publications, commercial gallery representation and inclusion in museum and corporate collections.

This year 56 new members were selected in a wide range of artistic media. "This exhibition showcases Silvermine's newest members' exploration of materials, arresting captures of nature's forms and patterns, vibrant use of color and light, and singular re-imaginings of the figure in sculptural and painted form," said Roger Mudre, Gallery Director at Silvermine. "We're delighted to welcome such a strong new group to the Guild."

In Memoriam

Hans Fischer

Sergio Gonzales-Tornero

Jak Kovatch

Enid Monroe

Dale Reinker

Louise Stern

Sadly, each year we lose some of our cherished artists. This year, we honor six distinguished members who made a lasting impression in and to our community. Their work, shown below, highlights the many talents of our Guild Artists.

*Left to right  
Top row: Enid Monroe, Dale Reinker  
Middle row: Hans Fischer,  
Sergio Gonzalez-Tornero  
Bottom row: Louise Stern, Jak Kovatch*







**New Members Exhibition**

January 19 – February 15, 2020

This exhibition highlights the work of 56 new members who have recently been juried into this dynamic artistic community of over 300 professional artists. Many of its' members have work represented in permanent collections of some of the world's most prestigious museums, as well as prominent, private and corporate collections.

View the exhibition on our website:  
[silvermineart.org/exhibition/new-members-show](http://silvermineart.org/exhibition/new-members-show)



**New Member's Exhibition**







LIFETIME GIVING

\$500,000+

Connecticut Office of the Arts

\$200,000 - \$499,999

Rose-Marie Fox & Bill Shanahan  
Hilda Kraus  
Jeniam Foundation  
Daniel Edward Offutt, III Private  
Foundation Trust  
Emily Daggy Vogel

\$100,000 - \$199,999

Hearst / Hearst Foundation  
Barbara & William Hilson  
New Canaan Community Foundation  
Estate of Elizabeth Neuberger  
Diana Wege Sherogan  
Jan & Robert Dilenschneider

Annual Giving

\$50,000+

Rose-Marie Fox & Bill Shanahan\*

\$20,000 - \$49,999

Colgate-Palmolive Company\*  
Cornelia T. Bailey Foundation

\$10,000 - \$19,999

The Daphne Seybolt Culpeper  
Foundation\*

\$5,000 - \$9,999

Diana & Lyman Delano\*  
Anonymous\*  
Elizabeth Higgins & William Jones\*  
Barbara & William Hilson\*  
Samuel Ingram\*  
Erin and Kevin Moore\*  
Newman's Own Foundation  
Dan Welch\*

\$1,000 - \$4,999

Bankwell\*  
Thomas Berntsen\*  
Carta, McAlister & Moore, LLC\*  
Huei-Nan Chi  
Marilyn Clements\*  
DIAGEO\*  
Katharine Draper\*  
Tom Dubin  
Carole Eisner\*  
Robin Jaffee Frank & Robert Frank\*  
Paul Gala

Annual Gifts

Christian Gilles  
Goldman Sachs & Co.  
Fran & Jack Meehan\*  
Jessica Jamner\*  
Stephanie Joyce & Jim Vos\*  
Joseph Kais\*  
George Krouse  
Peter Lampke\*  
Laura & Roger Lavan  
Barbara Linarducci\*  
Lee Lindgren\*  
Holly Maggio\*  
Debra McClave  
Carole Mills\*  
Sandra Mills  
Roger Mudre\*  
Cynthia Mullins\*  
Faye Mylen\*  
Karen & Gary Neems\*  
Laura Pflug  
Kathryn & Jerry Poch\*  
Penny Putnam\*  
Janine Robertson\*  
Judy Schubert  
Shivampa Investments  
Debbie Smith  
Maria Smith  
Judith Steinberg\*  
Melinda and Jeffrey Tepler\*  
The Claire and Theodore Morse  
Foundation  
The George A. & Grace L. Long  
Foundation\*  
Jere Thomson\*  
Jane & Carl Valentine\*  
Lei Wang  
Ann Weiner\*  
Westport Weston Family YMCA  
Vivien White\*  
Maxwell Wiesen\*  
Jennifer Williams  
Bonnie Woit\*

\$500 - \$999

June & Ron Ahrens\*  
Bridget Bucknall  
Charles Cheever, III\*  
Laurel & Richard Cohen\*  
John Colegrove  
Connecticut Humanities  
Donna Farber\*  
Renee Khatami\*  
Lynn Mara  
The Maurice Goodman Foundation\*  
Karin McCormick\*  
Nancy Moore Hulnick\*  
Melissa & Chappy Morris\*

Susie & James Perakis\*  
Daphne Sampson  
Diane and Spiros Segalas  
Christopher Schabacker III\*  
Steven Simmons  
Florence Suerig\*  
Susan Tremaine  
Donald Warfield\*  
Rose Wolfe\*  
Audrey Zinman

\$100 - \$499

Christine Aaron\*  
Carol & Alan Alterman\*  
AMG Charitable Gift Foundation\*  
Melissa Baker  
Daniel Benton  
Sonia Bombart\*  
Nancy Breakstone  
Margot Bright  
Meg Brisso  
Sylvia & Louis Broudy\*  
Janine Brown  
Miggs Burroughs\*  
Daniel Burstein  
Jennifer Cadoff\*  
Yu Cao  
Christa Carr  
Eric Chiang\*  
Alberta Cifolelli\*  
Donna Collins  
Kathleen Conway  
Susan & Bruce Cruikshank\*  
Pamela Davis\*  
Anonymous  
Liz & Lawrence Dexheimer\*  
Christina & Woodson Duncan\*  
Rebecca Hoefer & David Dunlop\*  
Laure Dunne\*  
Francine Even\*  
Alanna Fagan\*  
Donna Forma  
Sally Frank  
Julie Futch  
Diana Galik  
Liliana Geldmacher  
Nathaniel Gibbons\*  
Miranda Girard  
Leslie Giuliani\*  
Hanneke Goedkoop  
Wendy Graae  
Mindy Green\*  
Cherie & Ed Greene  
John Harris\*  
Carol Herbig\*  
Meg Hobson  
Mindy & Jay Horn\*

Renee Hughes  
Nash Hyon\*  
Irving & Aaronel deRoy Gruber  
Charitable Foundation\*  
Linda Kuehne\*  
Olivia Lawther\*  
Janet Levine\*  
Eva Levine\*  
David Lubarsky  
Louise Macchiarelli  
Harriet Mahoney  
Mary Manning\*  
Barbara Marks\*  
Lori Marrone\*  
Alex McFarlane\*  
David McKinnis  
Katherine Megrue-Smith  
Robert Meyer  
Bob Miranti\*  
Fredric Neuwirth\*  
Nancy Ego Nikkal\*  
Michael O'Brien  
Mary Ellen Pastore  
Mary Elizabeth Peterson\*  
Jay Petrow  
David Pressler\*  
Nancy & Dale Reinker  
Maureen Renahan-Krinsley\*  
Laura Rollins  
Kathy Rozsa\*  
Dee & Robert Sachs\*  
Lucy Sallick\*  
Missy Savard\*  
Mark Schiff\*  
Elyssa Schneider  
Susan Sommer Schweitzman\*  
Rick Shaefer\*  
Susan & Ronald C. Sharp\*  
Catharine Shirley  
Nomi Silverman\*  
Angela Sirico  
Jerry Slepach  
Anita Soos\*  
Eve Stockton  
Marc Suvall  
Marjorie Tomchuk\*  
Jo Ubogy  
Derek Uhlman  
Jenna Venditto  
Louise Washer\*  
Torrance York\*  
Suzanne Zarrilli  
Benjamin Zelermyer\*  
Florence Zolan

“Imagination is the beginning of creation. You imagine what you desire, you will what you imagine, and at last, you create what you will.”

George Bernard Shaw

Thank you for being an important part of Silvermine and sharing in our vision for the future.

Our Donors are vital to our success and we greatly appreciate your continued support.

Silvermine

\*3 Years Continual Giving



Financial Summary

Silvermine entered FY20 in a strong position. Carrying the momentum of FY19's record setting net income of \$327,687, we projected a fourth consecutive year of positive results enabling us to build back needed reserves. However, our progress was abruptly derailed by the COVID-19 pandemic. In response to the crisis, Silvermine closed to the public in mid-March resulting in a 100% shutdown of all revenues. Our annual Gala, which is crucial in raising funds, was also cancelled. Last year's FY19 Gala netted over \$170k. This year \$0. We finished the year with an operating deficit of (\$101,519) after depreciation directly due to the shutdown.

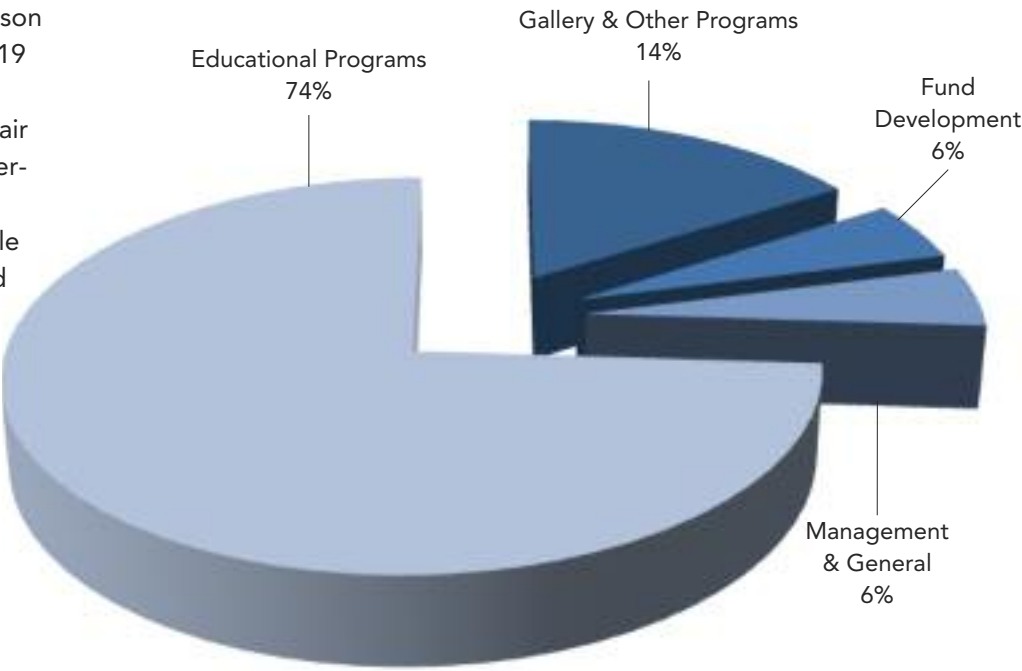
Despite the uncertainty, the Board and management agreed to reopen our campus to in-person classes strictly following Covid-19 guidelines. However, this called for significant expenditures for air filtration and cleaning while operating at less than 50% capacity.

We would not have been able to weather the crisis this far had we not been building back our reserves over the last three fiscal years. We are doing everything possible to sustain daily operations and provide services to our community. We sincerely hope that FY21 will represent a much brighter future for us all.

Fiscal Year Ending June 30, 2020

Operating Information

<b>REVENUE:</b>	
Tuition	\$1,344,967
Gala Net Income	14,000
Other Earned Income	238,920
Contributions & Membership	332,272
<b>TOTAL REVENUE</b>	<b>\$1,930,159</b>
<b>EXPENSES:</b>	
Compensation & Commissions	\$1,286,350
Scholarships & Outreach	39,626
Programming & Supporting Services	660,383
<b>TOTAL EXPENSES</b>	<b>\$1,986,359</b>
Depreciation Expense	45,319
<b>RESULT AFTER DEPRECIATION</b>	<b>(\$101,519)</b>



Silvermine Arts Center received an unqualified opinion of its financial statements by its independent auditor, Berkow, Schechter & Company LLP. Full audited financial statements are available at the Silvermine Administrative Offices.

Functional Expense Distribution

Silvermine is a 501(c)(3) not-for-profit organization

Staff

**Chief Executive Officer**  
Barbara Linarducci

**Gallery Director**  
Roger Mudre

**Outreach Education Coordinator**  
Missy Savard

**Development**  
Leigh Mickelson

**Marketing & Operations**  
Lisa Scroggins  
Lilly Steers

**School Operations**  
Clair Cohen

**Registrar**  
Kate Muldoon

**Gallery Assistant**  
Emily Bockisch

**Maintenance**  
Brian Bruni

Board of Trustees

**Chair**  
Rose-Marie Fox

**Vice-Chair**  
Barbara Linarducci

**Treasurer**  
Grace Tang

**Secretary**  
Robert Mallozzi

**Board Members**  
Mark Carta  
Stephanie Joyce  
William Hilson  
Joseph Kais  
Emily McDermott  
Roger Mudre\*  
Karen Neems  
Jon Puzzuoli\*

**Honorary Board**  
Cynthia Guest  
Sally Sheehy  
Leonard Tow  
Diana Wege

\*ex-officio

Institutional Partners

Daniel Edward Offutt, III Private Foundation Trust  
Daphne Seybolt Culpeper Foundation  
Connecticut Office of the Arts  
HEARST Foundation  
HEARST Connecticut Media Group  
Connecticut Health and Educational Facilities Authority  
Jeniam Foundation  
Colgate Palmolive Company  
New Canaan Community Foundation  
DIAGEO  
Blavatnik Family Foundation  
Anonymous  
Institute of International Education  
Brooks & Falatico Associates, Inc.  
Pitney Bowes Foundation, Inc.  
First County Bank Foundation, Inc.  
Fairfield County's Community Foundation  
Horizon Foundation, Inc.  
City of Norwalk  
AMG Charitable Gift Foundation  
Bankwell  
Newman's Own Foundation  
The John and Ethel Kashulon Foundation  
The George A. & Grace L. Long Foundation  
The Randolph Foundation  
Connecticut Humanities  
Aesthetic Surgery Center  
Pamela Einarsen Photography  
David Harvey Fine Jewelers  
Palmers Darien  
New Comers Club of New Canaan, Inc.



Grounded in the belief  
that art is vital to the spirit,  
creativity, and wholeness  
of human beings,  
the mission of Silvermine  
Arts Center is to cultivate  
and encourage growth  
through the arts;  
to promote and showcase  
artists; and to provide arts  
education opportunities for  
the greater community.

Silvermine

Silvermine Arts Center 1037 Silvermine Road New Canaan, CT 06840