

Silvermine

Annual Report





Silvermine

## Table of Contents

- 3 Letter from Board Chair
- 4 Fulbright Scholar  
Artist-in-Residence
- 5 School of Art
- 6 Galleries
- 8 Outreach
- 10 Our Impact
- 12 Guild of Artists
- 14 Living Art Awards Benefit
- 16 Annual Gifts
- 18 Financial Summary
- 19 Staff  
Board of Trustees  
Institutional Partners

*On our cover:*  
*Guthrie Pond on Silvermine's*  
*5 acre campus*

*This page:*  
Jim Felice  
*The Three Tenors*

## Letter from Board Chair

There is an energized, positive buzz around Silvermine and I am thrilled to be part of it. The Board, management, staff, faculty, students, guild artists and our generous donors are all part of the beat.

Relying on strong fiscal management and a focus on financial sustainability, Silvermine for the third year achieved positive results, further replenishing its necessary capital reserve. At the same time Silvermine is broadening its service to the community through its award-winning School of Art, its expanded Gallery programming, and its partnerships with other community organizations.

*Silvermine's* ArtAcademy, in partnership with STAR, Inc. brings the creative joy of expression and achievement to those with developmental disabilities. On Thursday mornings, the STAR transport rolls into the Silvermine parking lot and a beaming group of STAR members enthusiastically hustle to their art class for an adventure of learning and accomplishment. Using a variety of mediums and techniques, these wonderful artists produce stunning works of emotional depth and creativity.

*Silvermine's* Art Partners has reached the under-resourced youth in Stamford and Norwalk for 27 years, bringing a unique program designed to instruct academic subjects and develop social/emotional skills through the joy of making art. In partnership with Creative Connections, Silvermine is reaching the far corners of the globe with interactive programming and video conferencing with students in other countries. This year our students

shared art and life stories with students in Uganda and the Guatemalan Rain Forest—experiencing that while their lives are very different, their dreams and desires are the same.

*Silvermine's* art program with Silver Hill Hospital, is entering its sixth year engaging the healing power of art in a collaborative program—vital as addiction and mental health issues reach crisis proportions touching all of our communities.

*Silvermine* Galleries continue the focus on mental health this Fall with a curated exhibition, “HeART & Mind”, which will include works from accomplished artists delving into the many facets of mental illness, addiction and recovery—from despair to joy. Panel discussions and participatory workshops in dance, visual arts and music are planned.

*Silvermine* marked the inauguration of its Fulbright Scholar Artist-in-Residency featuring Ivana Radovanovic, from Centinje, Montenegro. Ivana created an outdoor, site-specific installation constructed from repurposed, natural materials, which are intended to weather with the elements. Silvermine is honored to be selected by the Institute of International Education (IIE) to host Fulbright scholars and looks forward to yearly sharing the Silvermine art experience with other extraordinary artists from around the world.

These are but a few highlights of the BUZZ at Silvermine. Come join us. Thank you for your support.

With sincere gratitude,

Rose-Marie Fox  
Board Chair



**Make cultural connections. Make geographic leaps. And while you're at it, make art.**

*This page: Ivana Radovanovic immersed in her installation  
Right page top: MFA Faculty Justin Wiest observing a student's progress  
Right page bottom: Animal Art in summer camp*

Situated on a bucolic five-acre campus, Silvermine School of Art is bustling with creative activity year-round in its 14 studio classrooms specializing in painting, drawing, printmaking, metal and stone sculpture, ceramics, bronze casting, glass flameworking, mixed media, jewelry, woodworking, special studies, digital imaging, and photography. Our award-winning school has over 4,000 annual enrollments, ages 4–94, and all ranges of experience and proficiency from beginner to advanced. What draws and keeps students at Silvermine is the outstanding, dedicated faculty and the widest range of disciplines in the area. There is nothing else like it.

This year marks the inauguration of Silvermine's Fulbright Scholar Artist-in-Residence in conjunction with the Institute of International Education (IIE) and generously supported by benefactor and artist Jan Dilenschneider. The IIE supports flagship exchange programs that "make the world a more interconnected place."

Ivana Radovanovic, this year's Artist-in-Residence, represented her country Montenegro in the Venice Biennale. Ivana holds a PhD from the Faculty of Fine Arts in Belgrade, Serbia and pursued post-doctoral research as a Fulbright Scholar at St. John University, NY. Ivana creates living, breathing site-specific installations that connect and commune with the environment. Silvermine is honored to have Ivana's work titled "Invitation" living in the wooded area behind the studios. "It will weather and change as the elements wear on it. It will disappear in time, but I like this", commented Ivana.

While rooted in its storied

97-year history, Silvermine is facing the future with new technologies and instruction launching its state-of-the-art Digital Labs providing high school and college age youth with professional level art & design and animation classes. Silvermine focuses on areas of study that prepare youth for career opportunities in the arts. A generous grant from the New Canaan Community Foundation and individual contributions made this possible.

Busy lives need to be able to review and register for classes at times convenient to them. Silvermine launched its new website and online/mobile registration this

year. Now students and parents can search courses and enroll in the comfort of their homes. Jeniam Foundation saw the need and provided Silvermine the funding necessary to create this platform.

Inclusivity is paramount to Silvermine. This year 81 scholarships were awarded to underserved youth and adults to extend the opportunity to learn and create at Silvermine. Limited financial resources should not prevent access to art education.

These exciting developments ensures that Silvermine School of Art remains a vibrant resource for all those who want to study art.



## Galleries

Walk your way  
through a  
goldmine of  
artistic expression.  
And feel free to  
talk about it.

The galleries continue to enrich the history of Silvermine with ever changing curated exhibitions that draw from its roots while looking into the future. With five galleries and a sculpture walk as a backdrop, 16 exhibitions are hosted annually drawing over 12,000 visitors.

### Highlights of this year:

#### ReFRAMING Aging: Health, Happiness, and the Arts—

Invitational Exhibition to debunk the myths about aging and to explore the importance of lifelong creativity. A keynote lecture, a moderated panel discussion, and a family day of art creation through storytelling engaged visitors of every age and explored the benefits of art, creativity, and discovery across generations. We are grateful for a generous grant from CT Humanities as well as individual donations that made this programming possible.

#### CT Contemporary 2018 —

showcased an exciting selection of new work from some of Connecticut's most accomplished contemporary artists and cutting-edge galleries giving the public a chance to see vibrant and surprising works of art from across the state.

**Paper 2019**—Jennifer Farrell, PhD, Associate Curator of Drawings and Prints at the Metropolitan Museum of Art, NYC, curated a diverse and contemporary take on art made with paper, attesting to the vitality of the medium and the infinite possibilities the material allows—sculpture, installations, drawing, printmaking, photography, collage, assemblage, and painting—to name but a few.



**Guild Group Exhibit** — Curated by Susan Eley, Susan Eley Fine Art NYC, Silvermine celebrated its extraordinarily accomplished group of painters, sculptors, print-makers, collage, and mixed media

artists from the Guild membership. Visitors saw new work and new explorations in a wide-range of mediums in this end-of-the-year Guild Group Exhibition.







With paint, clay, paper, and willing hands, we're building bridges one step at a time.



## ArtAcademy

In partnership with STAR, Inc., 'Lighting the Way', Silvermine launched the new 'ArtAcademy' Program to benefit people with disabilities. ArtAcademy taps into the transformative power of art for adults with intellectual and developmental disabilities by engaging them in a variety of art classes in an inclusive setting on Silvermine's campus.

We are grateful for the generous support from the Horizon Foundation and the Sidney Weiner Memorial Scholarship Fund for providing inaugural funding for the ArtAcademy.

## Art Partners

For 27 years, Art Partners, Silvermine's unique Outreach Education Program, has provided stimulating curriculum-based studio art classes for approximately 15,000 underserved students in elementary and middle schools, as well as after-school programs in Norwalk and Stamford. Over 1,000 children annually are served.

### Highlights of this year:

- Mayor Rilling, Norwalk celebrates the installation of "Garden People" at Fodor Farm with the young artists from Columbus Magnet School supported by First County Bank Foundation.
- Norwalk Housing Authority students created a beautiful book of poetry and photography which can be enjoyed at the Norwalk Library. Celebrating this accomplishment was a poetry reading at the library and an exhibition at the Silvermine Student Gallery.

## Outreach Education

- Entering its 20th year, Silvermine Elementary School's 5th Grade Mural has become a class tradition and a gift adorning the hallways for future students to enjoy.



## Silver Hill Hospital

Silvermine and Silver Hill Hospital have collaborated on an on-going program to bring adolescent patients in the Transitional Living Program to our School of Art to offer avenues of artistic expression—giving them an experience that will bring creative growth and emotional healing.

We are grateful for the continued support of our Corporate and Foundation sponsors: the Hearst Foundation, Colgate-Palmolive Company, Pitney Bowes Foundation, Inc., Bankwell, Westport Sunrise Rotary, as well the generous support of individuals who enable us to continue this important Program.

*Left page: Art created by Brookside Elementary School and ArtAcademy students*

*This page: ArtAcademy student and mural by Marvin Elementary School students*

## Creative Connections

In partnership with Creative Connections, Silvermine is expanding the cultural and creative experiences of students in the afterschool studio-art program at Nathan Hale Middle School, Norwalk. Concentrating on a theme of touring the globe through art and friendship, the students created and exchanged art with peers in other countries—this year, Uganda and Guatemala—using art to communicate about their lives and learn how others live across the globe, promoting understanding and appreciation of customs and traditions. Each semester culminates in a video conference with their new art friends. Through this face-to-face engagement, the students discover that despite differences and distance, they are more alike than they are different.







U  
N  
I  
T  
E  
D  
A  
R  
T  
I  
S  
T  
S

Our Impact

<b>1922</b> Silvermine Guild founded	<b>97</b> Years of excellence in art and art education
<b>5</b> Acre campus with 5 galleries, 14 studios & an outdoor sculpture walk	
<b>327</b> Guild professional artist members	<b>1</b> Fulbright Scholar Artist- in-Residence, our first!

**12,000**  
Visitors annually

**16**  
Exhibitions yearly

**Galleries**

**5**  
Galleries

**500**  
Exhibiting artists

**4,000+**  
Annual enrollments

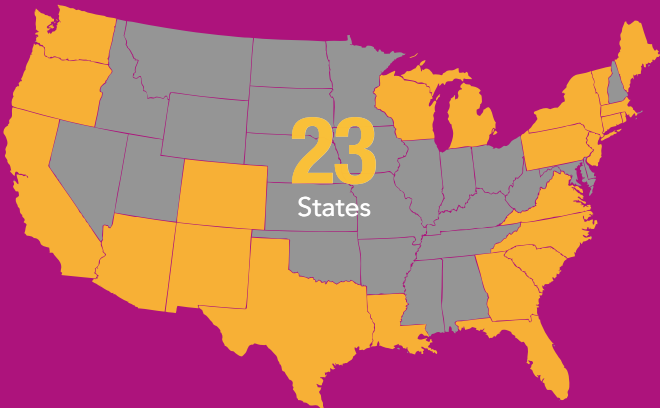
**1,100**  
Courses offered

**51**  
Art mediums

**81**  
Scholarships awarded

**4-94**  
Ages of students

School



**Donors**

**4**  
Continents

**155**  
Corporate and institutional donors

**76%**  
Donations from individuals

**15**  
Community partners

**1,100+**  
Under-resourced students served

**27**  
Years serving the community

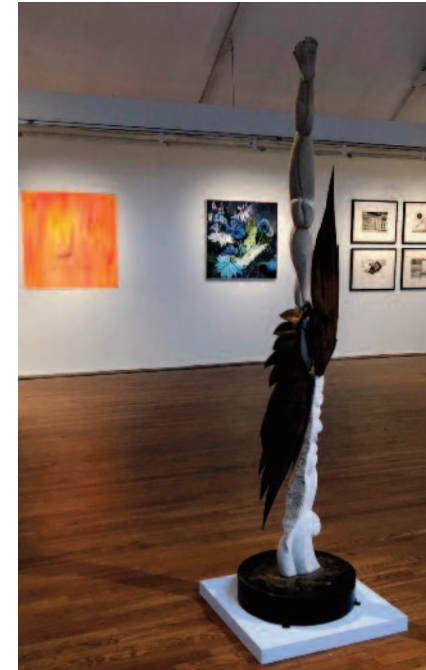
**3**  
Continents of reach

Outreach  
EDUCATION



It's still a place  
where artists'  
imaginations and  
visions rule.

Since 1906 when visionary sculptor Solon Borglum moved to Silvermine and held annual exhibitions in his studio and weekly critiques called the Knockers Club, Silvermine has been a place for artists to gather.



In 1922 The Silvermine Guild of Artists was formed and later incorporated as a not-for-profit to provide a permanency to the community of artists.

Silvermine has a 97-year reputation of exhibiting and involving art luminaries such as Joseph Albers, Gabor Peterdi, Milton Avery, Elaine deKooning, Clement Greenberg, Louise Nevelson, Larry Rivers, Jeanne-Claude and Christo, James Rosenquist, Chuck Close, Philip Johnson—and the list goes on.

Today, the Guild is comprised of over 300 professional artists who enhance and change the way we experience art. Widely respected and highly collectible, their multi-disciplined work

can often be viewed in Gallery exhibitions.

We continue to honor our heritage by expanding the borders of our contemporary exhibitions to include recognized emerging artists from across the United States to exhibit at Silvermine. These exhibitions highlight current art trends and broaden the community's understanding and appreciation of art by bringing some of the most influential pundits in contemporary art to Fairfield County.

#### New Members

Each year the Guild is honored to welcome into its ranks a competitively selected group of new artist members. Since its inception, Guild membership has been a juried process based on the quality of the artists' submitted works and professional achievements. Our Guild members have attained a superior level of technical and creative accomplishment as demonstrated by numerous group and solo exhibitions, awards, publications, commercial gallery representation and inclusion in museum and corporate collections.

This year forty-three new members were selected in a wide range of artistic media. "This exhibition showcases Silvermine's newest members' exploration of materials, arresting captures of nature's forms and patterns, vibrant use of color and light, and singular re-imaginings of the figure in sculptural and painted form," said Roger Mudre, Gallery Director at Silvermine. "We're delighted to welcome such a strong new group to the Guild."

#### In Memoriam

Loretta Dillman  
Lois Flint Eldridge  
Elaine Feiner  
Barbara Powell  
Phillis Raskind  
Charles Reid

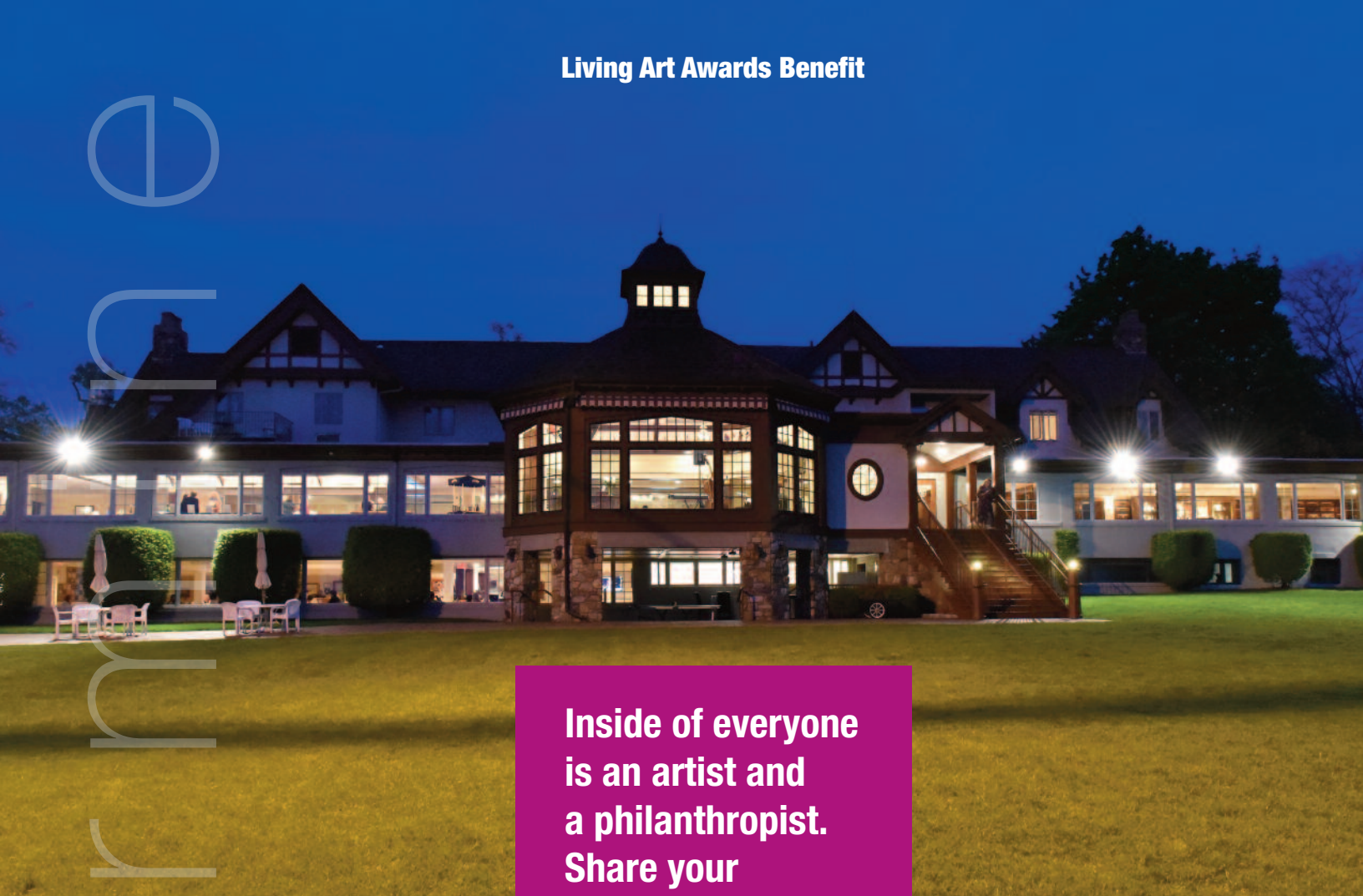
Sadly, each year we lose some of our cherished artists. This year, we honor six long-time members who made a lasting impression in and to our community. Their work, shown below, highlights the many talents of our Guild Artists.

*Left to right*  
*Top row: Elaine Feiner, Phillis Raskind*  
*Middle row: Charles Reid, Loretta Dillman*  
*Bottom row: Lois Flint Eldridge, Barbara Powell*





## Living Art Awards Benefit



**Inside of everyone is an artist and a philanthropist. Share your passion. It could be life-changing.**

### The Fourth Annual Living Art Awards Benefit

Silvermine held its fourth annual Living Art Awards Benefit on May 11 at the picturesque Stamford Yacht Club.

This year we recognized Visionaries for Art who made their mark insuring ART is vibrant in our community. Each honoree played a principle role in Silvermine's

triumphs and partners with us today in forging our future.

Some are artists, some not, but all share in their passion for supporting the arts—it changed their lives and ours.

Silvermine honored: **DIAGEO—Corporate Award—**for their philanthropic commitment to the community and generous support of Silvermine.

**Pamela Davis—Legacy Award—**for steadfast leadership as Executive Director, abounding generosity and artistic accomplishment as a member of the Guild of Artists.

**Fran Meehan—Artist Award—**for strategic leadership as Chair, Board of Trustees, munificent support and artistic excellence as a member of the Guild of Artists.

**Lyman & Diana Delano—Philanthropy Award—**for philanthropic commitment to Silvermine, especially the School of Art and ceramics studio.

This year's Living Art Awards Benefit is made possible by the dedication of co-chairs David Dunlop, Stephanie Joyce, (below) and their committee.



**Fran Meehan**  
"Silvermine is a gem in the woods. Everything I was looking for was right here. It's a special place where you can truly express yourself."

*Honorees: Fran Meehan, Pamela Davis, Svetlin Tchakarov—DIAGEO*



**Svetlin Tchakarov—DIAGEO**  
"I'm a big believer that art shapes who we are. In the presence of art, people become more positive and start looking at the world in a much bigger way."

### Pamela Davis

"I've witnessed artistic growth and joy in so many students, young and not so young. The buildings burst with energy, the faculty is unparalleled, and the staff is undeniably committed to Silvermine."



*Rose-Marie Fox, Board Chair, Michael Yaeger, Goldman Sachs, CT Senator Bob Duff*

*Robin Jaffee Frank, Director, Strategy & Development, Norwalk Mayor Harry Rilling & Lucia Rilling, Sophia Gevas, Outreach Education Director*



*Rob Mallozzi, Former New Canaan First Selectman & Silvermine Trustee, New Canaan First Selectman Kevin Moynihan, Rose-Marie Fox, Board Chair*





LIFETIME GIVING

\$500,000+

Connecticut Office of the Arts

\$200,000 - \$499,999

Rose-Marie Fox & Bill Shanahan  
Hilda Kraus

Jeniam Foundation

Daniel Edward Offutt, III Private  
Foundation Trust  
Emily Daggy Vogel

\$100,000 - \$199,999

Hearst / Hearst Foundation  
Barbara & William Hilson  
New Canaan Community Foundation  
Estate of Elizabeth Neuberg  
Diana Wege Sherogan  
Jan & Robert Dilenschneider

Annual Giving

\$50,000+

Connecticut Health and Educational  
Facilities Authority  
Daniel Edward Offutt, III Private  
Foundation Trust  
Rose-Marie Fox & Bill Shanahan\*

\$20,000 - \$49,999

Colgate-Palmolive Company\*  
Connecticut Office of the Arts\*  
Pamela Davis\*  
Barbara & William Hilson\*  
Institute of International Education  
Jan & Robert Dilenschneider\*  
Stephanie Joyce & Jim Vos\*

\$10,000 - \$19,999

Blavatnik Family Foundation\*  
The Daphne Seybolt Culpeper  
Foundation\*  
DIAGEO\*  
Fran Henry-Meehan & Jack Meehan  
Horizon Foundation, Inc.  
Javed Shahid\*  
Grace Hui Tang  
Peter Tauck  
The John and Ethel Kashulon  
Foundation  
Ann Weiner\*

\$5,000 - \$9,999

June & Ron Ahrens\*  
Brooks and Falotico Associates, Inc.\*  
City of Norwalk\*

Annual Gifts

Marilyn Clements\*  
Jamie Delaney  
Diana & Lyman Delano\*  
Anonymous\*  
Elizabeth Higgins & William Jones\*  
Samuel Ingram\*  
Jane & Richard Kresch  
Martin McLaughlin  
Erin & Kevin Moore\*  
The Pitney Bowes Foundation, Inc.\*  
Jon Puzzuoli\*  
Judith Steinberg\*  
Vivien White\*  
Laura & Michael Yaeger

\$1,000 - \$4,999

Beth Barsky\*  
Carta, McAlister & Moore, LLC  
Jill Castle  
Heidi Lewis Coleman\*  
Connecticut Humanities  
Brian Cowie  
David Harvey Jewelers\*  
Elizabeth Deambrosio\*  
Liz & Lawrence Dexheimer\*  
Katharine Draper\*  
Carole Eisner\*  
Donna Farber\*  
Frédéric Fekkai\*  
Paul Foley  
Robin Jaffee Frank & Robert Frank\*  
Christian Gilles  
Pamela Greenblatt  
Rebecca Hoefer & David Dunlop\*  
Joy Hoffman\*  
Gail Ingis\*  
Stephen Jaeger\*  
Jessica Jamner\*  
Karen Kalkstein\*  
Margarita & Irving Kuznetzow  
Peter Lampke\*  
Shirley Leung\*  
Barbara Linarducci \*  
Lee Lindgren\*  
Mary MacCleod  
Holly Maggio\*  
Robert Mallozzi  
Margery & Edgar Masinter  
Susan McClellan Valk  
Emily McDermott\*  
Nancy McTague-Stock & Robert Stock\*  
Carole Mills  
Roger Mudre\*  
Cindi Mullins\*  
Naturepedic Organic Mattress Gallery  
Karen & Gary Neems\*  
Palmer's Darien\*

David Passaretti, MD Aesthetic  
Surgery Center  
Margaret Pederson\*  
Kathryn & Jerry Poch\*  
Penny Putnam  
Susan Riley  
Anonymous\*  
Janine Robertson\*  
Missy Savard\*  
Heather & Andrew Schoff  
Debra Schwartzberg  
Susan Sommer Schweitzman  
Vicki Smith\*  
Anne Smith\*  
Stephen Snyder  
Kate Stiassni  
Dave Stuckey  
Jo Tang\*  
Melinda & Jeffrey Tepler\*  
Jere Thomson\*  
Meg & Jim Tweedy\*  
Jane & Carl Valentine\*  
Melanie Ward\*  
Dan Welch\*  
Maxwell Wiesen\*  
Bonnie Woit\*

\$500 - \$999

Tom Berntsen\*  
Kimberly Callet  
Lena Scott Fritts  
Sophia Gevas & Theodore C. Burt, Jr.\*  
Handwright Gallery & Framing\*  
Irving & Aaronel deRoy Gruber  
Charitable Foundation\*  
Jean E. Krasno  
Anonymous\*  
The Maurice Goodman Foundation\*  
Karin McCormick\*  
Beth Meehan  
Tracy & Joe Merrill  
Melissa & Chappy Morris\*  
Kevin Moynihan  
Pamela Einarsen Photography\*  
Susie & James Perakis\*  
Susan Peyser  
Stacey & Kip Schibli\*  
Paul Smadbeck  
Kelly & Tim Smith  
Anne & Robert Svensk\*  
Yvette Van Dijk-Fran & Pieter Van Dijk  
Donald Warfield\*  
Allen Wasserman

\$100 - \$499

Christine Aaron\*  
Pippa & David Ader\*  
Advanced Specialty Care

Carol & Alan Alterman  
AMG Charitable Gift Foundation\*  
Andrew Stefanou Salon & Spa\*  
Frances Ashforth  
Baldanza Cafe  
Harold Ballou  
Bank of America  
Bankwell\*  
Nina Bentley\*  
Margot & Rich Bittenbender\*  
Gilbert Boro  
Gail Bradshaw\*  
Nancy Breakstone  
Sylvia & Louis Broudy\*  
Fran Burger\*  
Miggs Burroughs\*  
Jennifer Cadoff  
Sharon Cavagnolo\*  
Charles Cheever, III\*  
Ann Chernow\*  
Chestnut Electric Corp  
Chilton and Chadwick  
Christies  
Alexander Churchill  
Susan Clinard  
Laurel & Richard Cohen\*  
Ann Conrad  
Kathy Conway  
Camilla Cook  
Anonymous\*  
Susan & Bruce Cruikshank\*  
Tertuliano Delgado  
Elyse Demartini  
Peggy & Neal Dembicer\*  
Daisy DePuthod  
Alfred DiMaio\*  
Amanda Duchen  
Christina & Woodson Duncan\*  
Laure Dunne\*  
EOS Greek Cuisine  
Jeanine Esposito & Frederic Chiu\*  
Alanna Fagan\*  
Flinders Lane Kitchen And Bar  
Lucia Ford  
Lynne Foster  
Vanessa Frosini  
Nathaniel Gibbons\*  
Leslie Giuliani\*  
Ronnie Gold  
Helen & William Gore\*  
GrayBarns  
Mindy Green\*  
Robert Gregson\*  
Shiela Hale\*  
Heather Gaudio Fine Art\*  
Jayme Heller  
Carol Herbig\*  
Ann Hodgdon-Cyr

Meryl Hoffman\*  
Mindy & Jay Horn\*  
Nash Hyon\*  
Ruth & Bruce Ipe\*  
Jerry's Artarama\*  
Joseph Kais\*  
Inez & Joel Karp  
Howard Kelly  
Niki Ketchman  
Renee Khatami  
Lucy Krupenye\*  
Linda Kuehne\*  
Lakota Oaks  
Lanphier Day Spa  
Nancy Lasar\*  
Olivia Lawther  
Cate Leach\*  
Susan Leggitt  
Sean Lenahan  
Anne Levine  
Eva Levine\*  
Janet Levine\*  
David Lubarsky  
Susan Manspeizer  
Barbara Marks\*  
Lori Marrone\*  
Darcy McAlister & Mark Carta\*  
Alex McFarlane\*  
Juliana McKenna  
Christopher Meehan  
Claudia Mengel\*  
Merrill Lynch  
Robert Meyer  
Leigh Taylor Mickelson  
Bob Miranti  
Dayan Moore  
Nancy Moore Hulnick\*  
Erin Nazzaro  
Susan Newbold\*  
Anonymous  
Noble Salon  
Jesse Nusbaum  
Angie O'Brien\*  
Jennifer O'Connell Reid  
Margaret Oland  
Constance & Jon Old\*  
Anna Patalano  
Frances Palmer  
Yamini Pinto  
Stephen Pomponi  
Posh Spa & Nail  
David Pressler\*  
Jo-Anne Price  
Richard Reische  
Maureen Renahan-Krinsley\*  
Marilyn & John Richeda\*  
Kathy Rozsa\*  
Nan Runde

Annual Gifts

Dee & Robert Sachs\*  
Lucy Sallick  
Scena Wine Bar  
Chris Schabacker III\*  
Ingrid Scheibler  
Mark Schiff\*  
Lisa Scroggins\*  
Jennifer Servedio  
Rick Shaefer  
Rosalind Shaffer\*  
Susan & Ronald C. Sharp\*  
Gail Sheriff  
Marlene Siff\*  
Silvermine Market\*  
Tania Smith  
Anita Soos\*  
Sorelle Gallery  
Specs of Westport\*  
Stamford Ford  
Eve Stockton  
Support Plus LLC\*  
Sofie Swann  
Katarina & Svetlin Tchakarov\*  
Juliette Tehrani\*  
Ten Twenty Post  
Lawrence Tetenbaum\*  
The Concepts Group  
The Growing Concern  
The New Canaan Community YMCA, Inc.  
George Thom\*  
Katherine Thornton  
Marjorie Tomchuk\*  
Natalie Toraty  
Peter Van Zyl\*  
Velocity Printing\*  
Karen Vogel\*  
Louise Washer\*  
Chuck Wilette  
Rose Wolfe\*  
Cheryl & David Wolff  
Dmitri Wright\*  
Yankee Custom Builders  
Torrance York\*  
Michael Zack\*  
Benjamin Zelermyer\*

Thank you  
for being an important part  
of Silvermine and sharing in  
our vision for the future.

Our donors  
are vital to our success  
and we greatly appreciate  
your continued support.

\*3 Years Continual Giving



Financial Summary

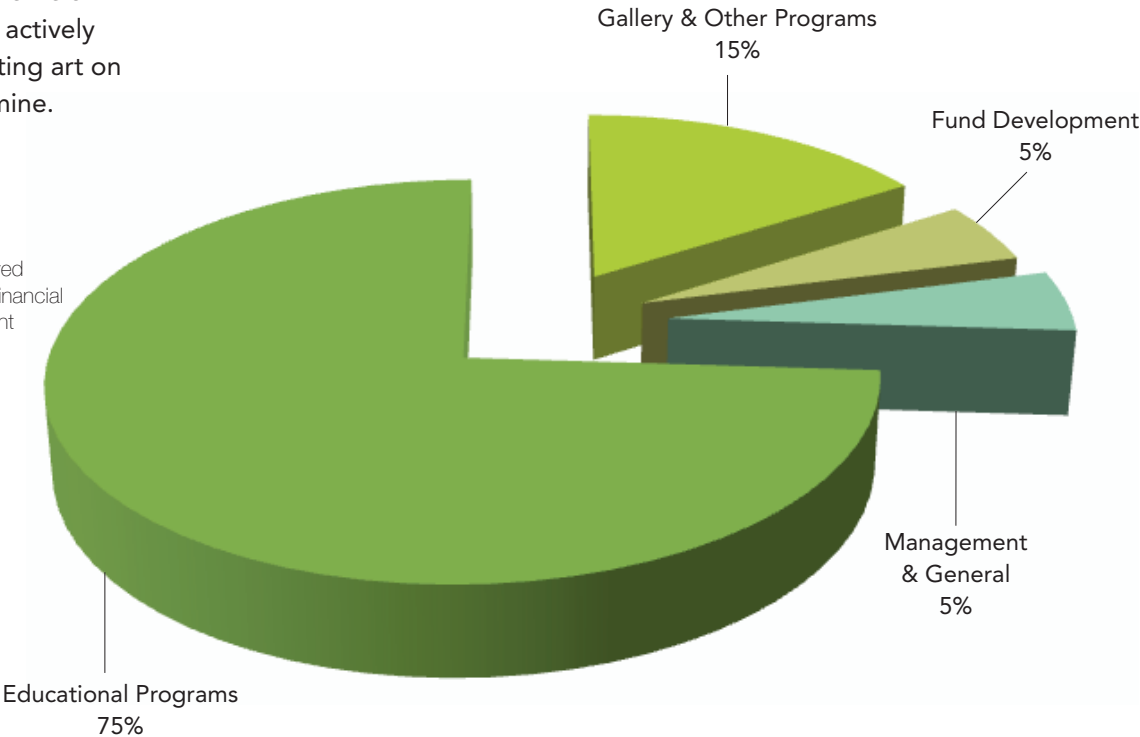
Silvermine continues for the third year to build back reserves to create financial sustainability. Silvermine’s FY19 Result after Depreciation was \$327,687—an increase of \$140K over FY18 results of \$187K. Contributions and Membership demonstrated a significant increase in support to \$552K. We are deeply grateful to all our generous supporters. Silvermine used resources to expand community programming bringing the joy and rehabilitative power of art to greater numbers of underserved youth in the public schools as well as individuals with special needs. Our mission is embracing wider markets through our community partnerships. Our results and mission are strong. We look to the Centennial on the horizon with the vision of future generations actively making and appreciating art on the campus of Silvermine.

Silvermine Arts Center received an unqualified opinion of its financial statements by its independent auditor, Berkow, Schechter & Company LLP. Full audited financial statements are available at the Silvermine Administrative Offices.

Fiscal Year Ending June 30, 2019

Operating Information

<b>REVENUE:</b>	
Tuition	\$1,768,022
Gala Net Income	170,098
Other Earned Income	210,055
Contributions & Membership	552,352
<b>TOTAL REVENUE</b>	<b>\$2,700,527</b>
<b>EXPENSES:</b>	
Compensation & Commissions	\$1,499,061
Scholarships & Outreach	65,766
Programming & Supporting Services	752,577
<b>TOTAL EXPENSES</b>	<b>\$2,317,404</b>
Depreciation Expense	55,436
<b>RESULT AFTER DEPRECIATION</b>	<b>\$327,687</b>



Functional Expense Distribution

Silvermine is a 501(c)(3) not-for-profit organization

Staff

**Director, Finance & Operations**  
Barbara Linarducci

**Director, Strategy & Development**  
Robin Jaffee Frank, PhD

**School Director**  
Anne Connell

**Gallery Director**  
Roger Mudre

**Outreach Education Director**  
Sophia Gevas

**School Financial Manager**  
Bruce Dunbar

**Marketing & Operations Associate**  
Lisa Scroggins

**School Administrator**  
Clair Cohen

**School Registrar**  
Lianne Metter

**Gallery Associates**  
Janet Morris  
Teresa Gay  
Leslie Cullen

**Maintenance**  
Brian Bruni

Board of Trustees

**Chair**  
Rose-Marie Fox

**Vice-Chairs**  
Barbara Linarducci\*  
Robin Jaffee Frank, PhD\*

**Treasurer**  
Grace Tang

**Secretary**  
Shirley Leung

**Board Members**  
Mark Carta  
David Dunlop  
Stephanie Joyce  
William Hilson  
Joseph Kais  
Rob Mallozzi  
Emily McDermott  
Roger Mudre\*  
Karen Neems

**Honorary Board**  
Cynthia Guest  
Sally Sheehy  
Leonard Tow  
Diana Wege

\*ex-officio

Institutional Partners

Daniel Edward Offutt, III Private Foundation Trust  
Daphne Seybolt Culpeper Foundation  
Connecticut Office of the Arts  
HEARST Foundation  
HEARST Connecticut Media Group  
Connecticut Health and Educational Facilities Authority  
Jeniam Foundation  
Colgate Palmolive Company  
New Canaan Community Foundation  
DIAGEO  
Blavatnik Family Foundation  
Anonymous  
Institute of International Education  
Brooks & Falatico Associates, Inc.  
Pitney Bowes Foundation, Inc.  
First County Bank Foundation, Inc.  
Fairfield County’s Community Foundation  
Horizon Foundation, Inc.  
City of Norwalk  
AMG Charitable Gift Foundation  
Bankwell  
The John and Ethel Kashulon Foundation  
The George A. Long & Grace L. Long Foundation  
The Randolph Foundation  
Connecticut Humanities  
Aesthetic Surgery Center  
Pamela Einarsen Photography  
David Harvey Fine Jewelers  
Palmers Darien  
New Comers Club of New Canaan, Inc.





# Silvermine

Silvermine Arts Center 1037 Silvermine Road New Canaan, CT 06840